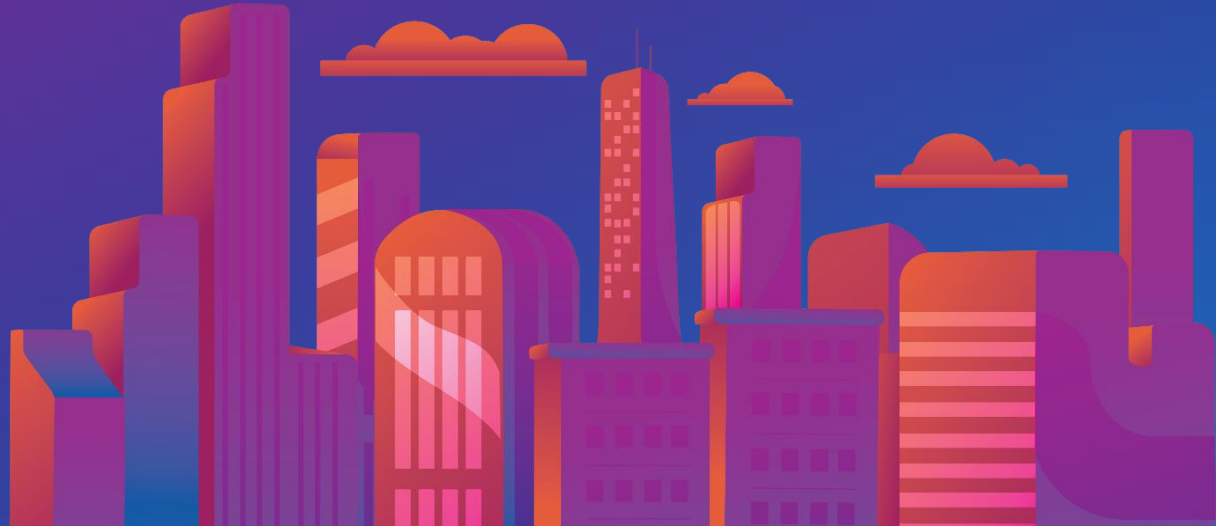




Location enrichment with Pitney Bowes

February 12, 2019

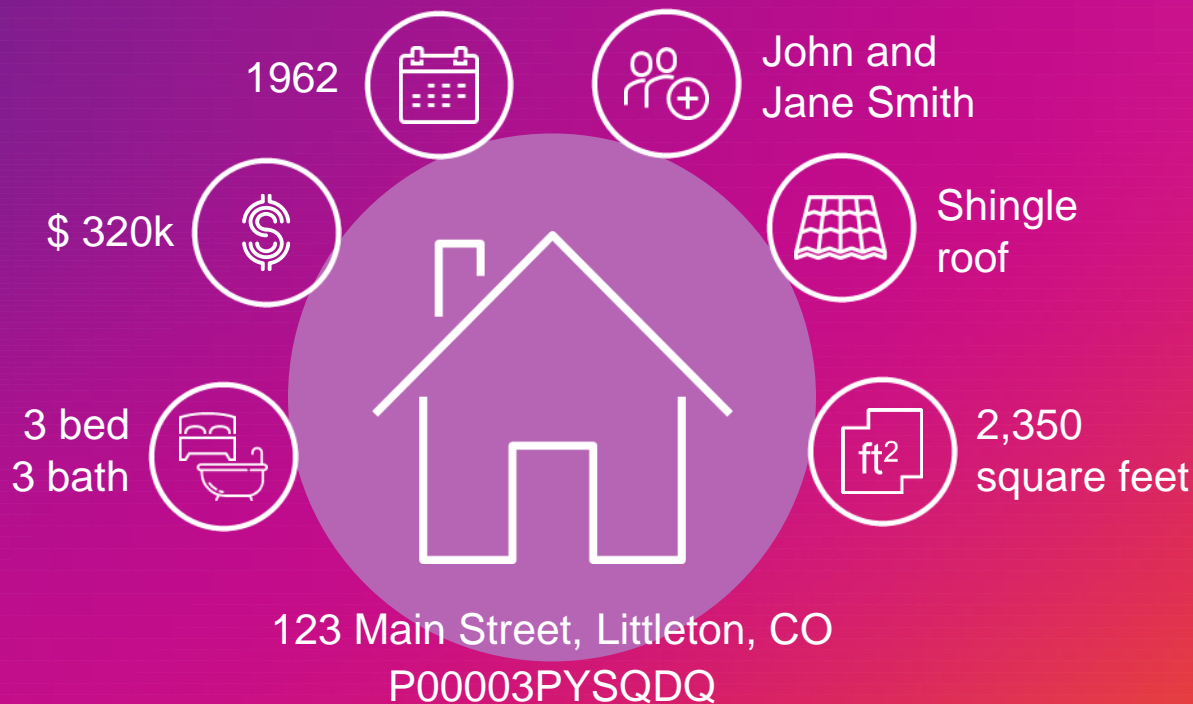


Pitney Bowes data solving real world problems



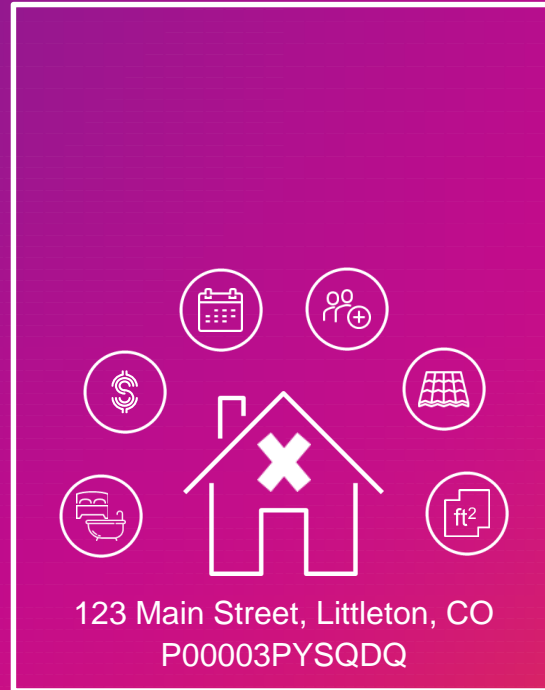
Understand the property (addresses and property attributes)

**187+ million
addresses in US**



**Over 200+
property attributes**

Hyper accurate location (geocoding)

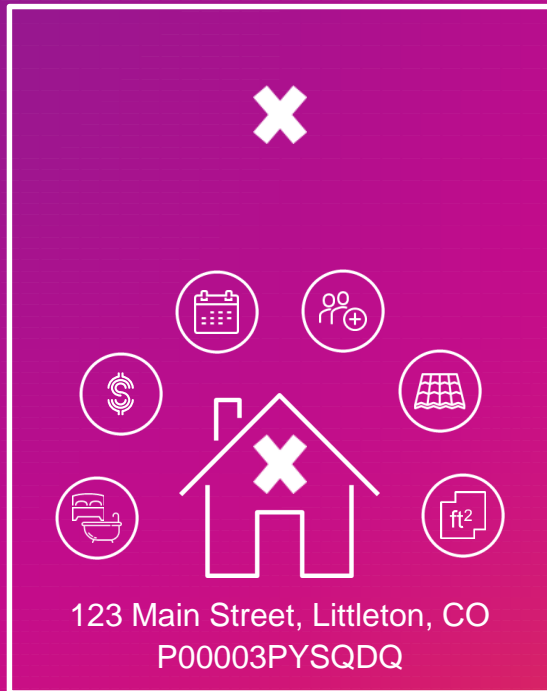


Know risk (risk and weather data)

150+
risk attributes



100 year flood zone



High wildfire risk



Low Crime



Tornado history



75 degrees and sunny

Organize to analyze (boundaries)

Colorado



Organize to analyze (boundaries)

Littleton



Organize to analyze (boundaries)

80120



Organize to analyze
(boundaries)

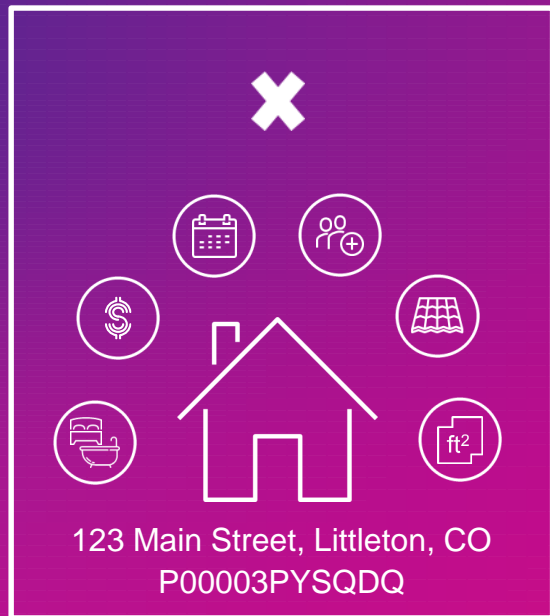
Littleton Heights



65+ boundary types

Add location context (demographics and geodemographics)

Colorado — Littleton — 80120 — Littleton Heights



8,000+ neighborhood attributes



Median income \$100k



35% married, 40% never married



“Professional urban families”



80% white / 20% other



30% school age kids

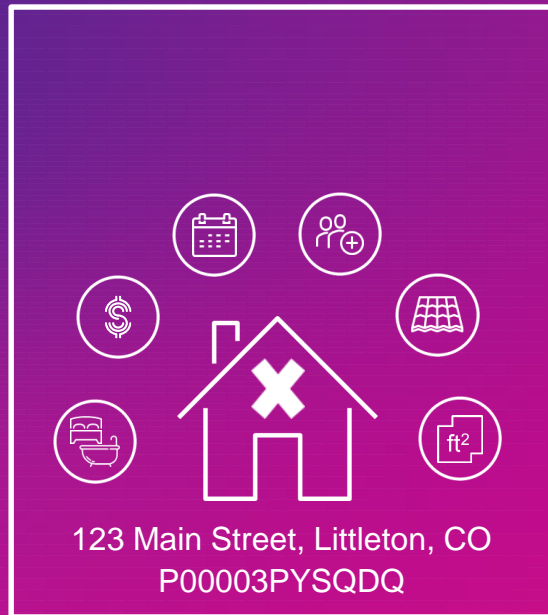


23% High School degree,
30% Bachelors degrees
and higher

Merge the digital and physical worlds (consumer & social data)



Colorado — Littleton — 80120 — Littleton Heights



200+ consumer attributes
7,500+ social affinities



Bill Johnson (303)555-5555



Sports > Football – Denver Broncos



amyj342@gmail.com



Politics > US Conservative



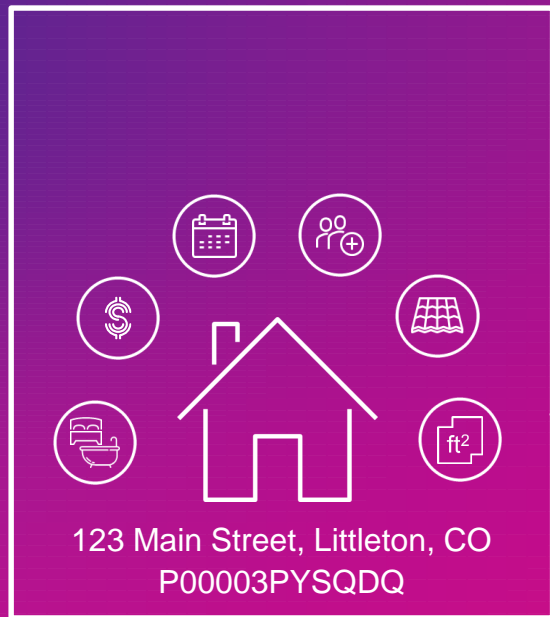
@dylanj



Activities > Snow Boarding

What is around you? (routing data / points of interest)

Colorado — Littleton — 80120 — Littleton Heights



70+ commercial attributes

170 million points across 174 countries

19k standard classifications



Nearest...



Coffee Shop –
0.5 miles



Gas Station –
0.75 miles



Supermarket –
1.5 miles



Gym –
1.25 miles

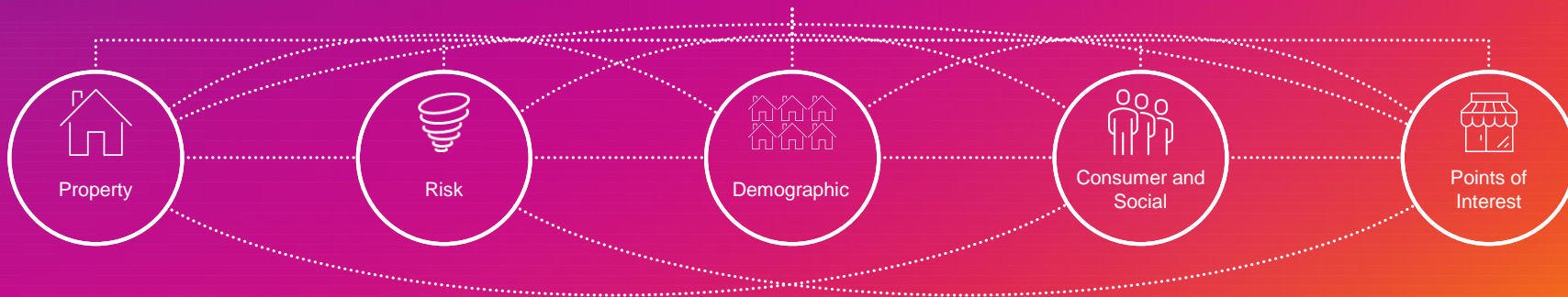


Airport –
10 miles

Operationalize location enrichment (pbKey)



123 Main Street, Littleton, CO
P00003PYSQDQ



Enrich location with thousands of attributes

187+ million addresses in US



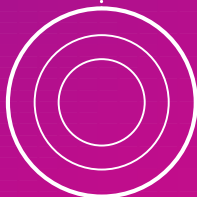
123 Main Street, Littleton, CO
P00003PYSQDQ



**200+
property
attributes**



**150+
risk
attributes**



**65+
boundary
types**



**8,000+
neighborhood
attributes**



**200+
consumer
attributes and
7,500+
social
affinities**



**70+
commercial
attributes**