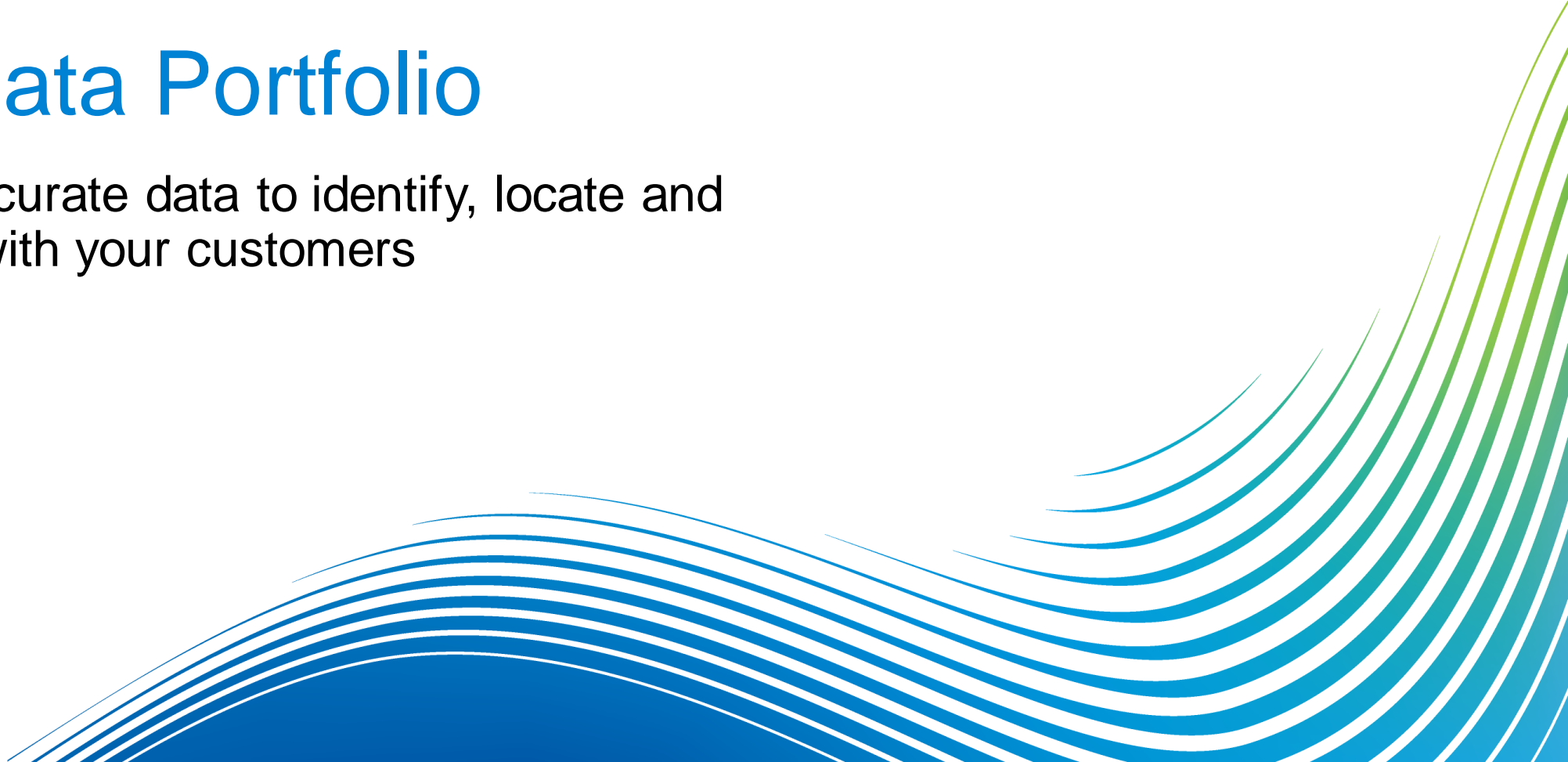


# Global Data Portfolio

Precise and accurate data to identify, locate and communicate with your customers





An aerial photograph of a city, likely Hong Kong, with a dense cluster of skyscrapers and a large body of water. A network of white lines connects various points across the city, with some points highlighted by bright, glowing light effects. The overall tone is blue and futuristic.

There has been a  
fundamental shift in the way  
we all do business.



Only Pitney Bowes has the knowledge,  
technology and data to fill the gap.



## Identify

Managing the information about who

---



## Locate

Answering the question of where

---



## Communicate

Informing action

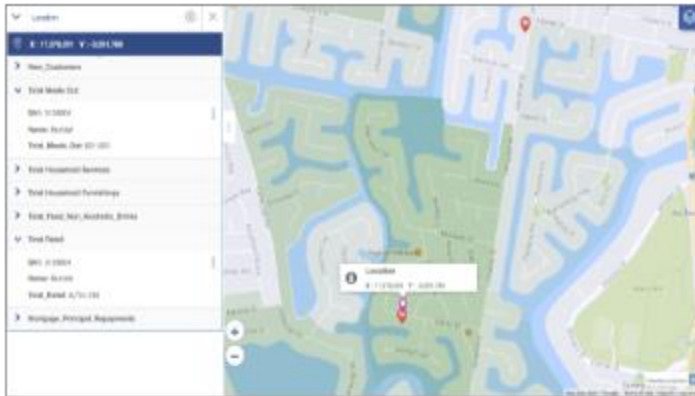
---



# To making strategic business decisions based on location

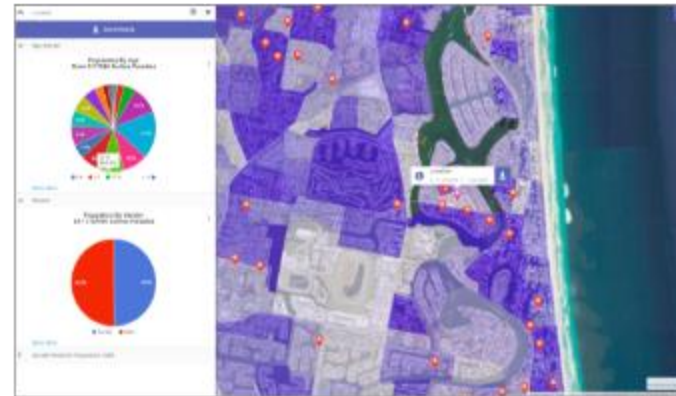


## Location analytics



Use precise geocoding and data-driven mapping for greater insight.

## GeoEnrichment



Add demographics, points of interest and industry-specific data for a complete, contextual view.

## Business Intelligence



Integrate location insight into day-to-day business workflows for more accurate, automated decisions.

*We provide more context, precision and relevancy through location data.*

# Four distinct data portfolios to provide extensive depth and breadth of insight.



- 
- Map Tiling
  - [World StreetPro®](#)
  - [StreetPro® Classic](#)
  - [StreetPro® Display](#)
  - [StreetPro® Navigation](#)
  - Desktop Routing and Drivetime Networks for MapInfo Routefinder
  - Enterprise Routing and Drivetime Networks for ERM



- 
- [World Premium Points of Interest](#)
  - [World Premium POI – Consumer](#)
  - [Travel Time Isochrones](#)
  - [Financial Stress and Delinquency Scores](#)
  - [Business Summaries](#)
  - [Financial Institution Branch Locations](#)
  - [Retail Destinations](#)
  - [Retail Pitchpoint](#)



- 
- [World Boundaries Premium](#)
  - [Postcode and Administrative Boundaries](#)
  - [Community Boundaries](#)
  - [Postcode Points and Administrative Reference Tables](#)
  - [World Timezones](#)
  - [Cadastre, Parcel, Building Outlines and Indoor Maps](#)
  - **Vertical Data:**  
[Telco Boundaries](#)  
[Risk Boundaries](#)



- 
- [Base Demographics](#)
  - [Detailed Demographics](#)
  - [Geodemographics](#)
  - [Location Classifications](#)
  - [Income](#)
  - [Wealth](#)
  - [Purchasing Power](#)
  - [Consumer Expenditure](#)

# Software & Data Marketplace

The background of the slide features a gradient from deep blue on the left to a vibrant purple on the right. In the lower right quadrant, there are several concentric, wavy lines that create a sense of motion and depth, transitioning from light blue to a bright magenta.



# Introducing the Software and Data Marketplace



Data Access

Improving access to Pitney Bowes data and software products

- Improved delivery
- Data discovery
- Ability to download data samples
- Online purchasing capabilities

