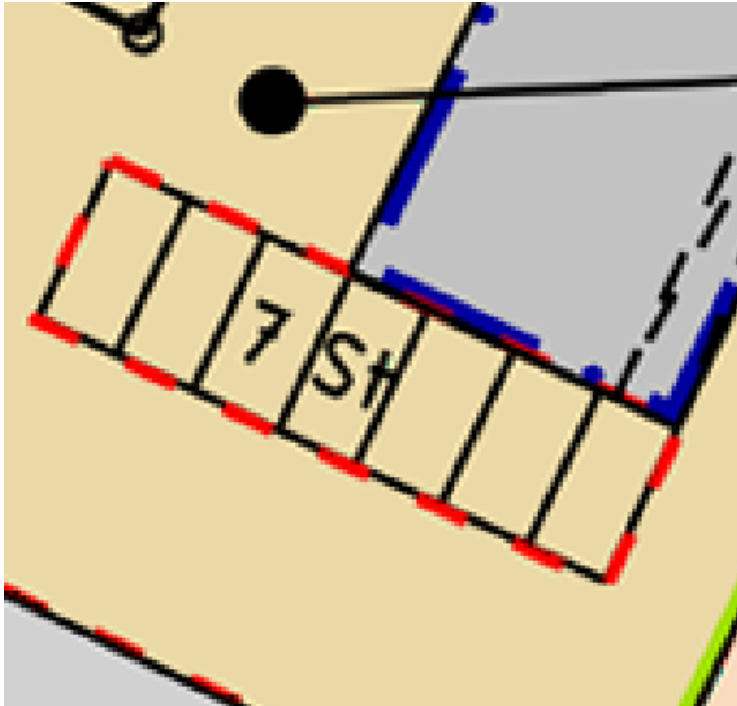


Rasterfile based on \*.tif-Format

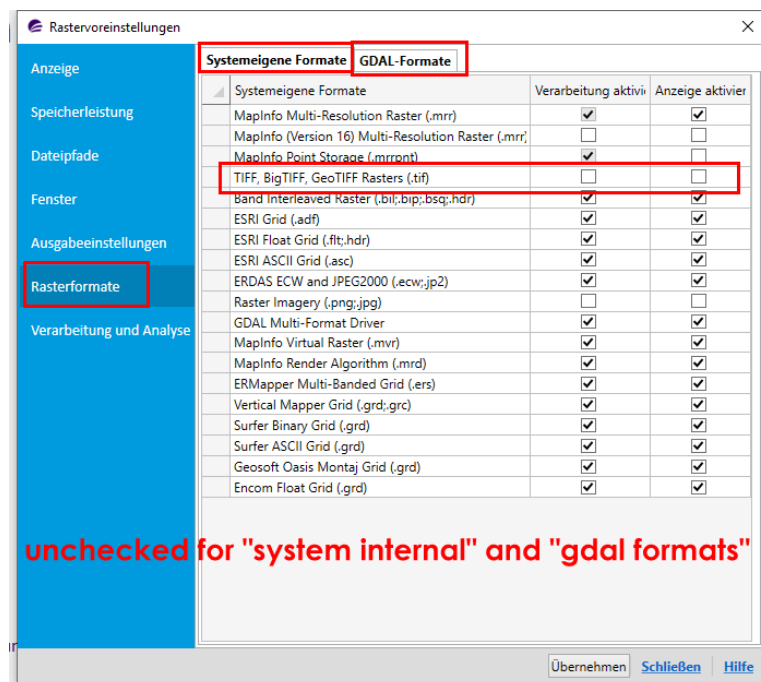
Red lines are displayed correctly.

Using MapInfo Pro 2019.3 (45)



Requirements for a correct display:

Based on the settings for MapInfo Pro Raster:



Red lines are NOT displayed correctly.

Using MapInfo Runtime 2019.3 (43)

or

Using MapInfo Pro 2019.3 (45) but NOT applying the settings in MapInfo Pro Raster.

