

Good! User guide doesn't cut it nowadays. I want a tutorial on making a thematic map using ABS area like SA1 (statistical area 1). How to I change the csv files to text so that I can it work?

Ross Johnson
South Australia

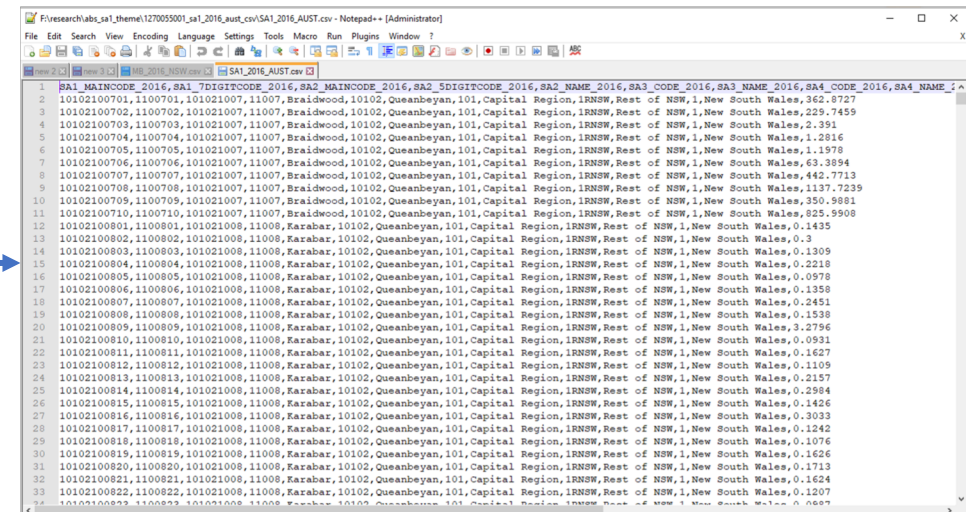
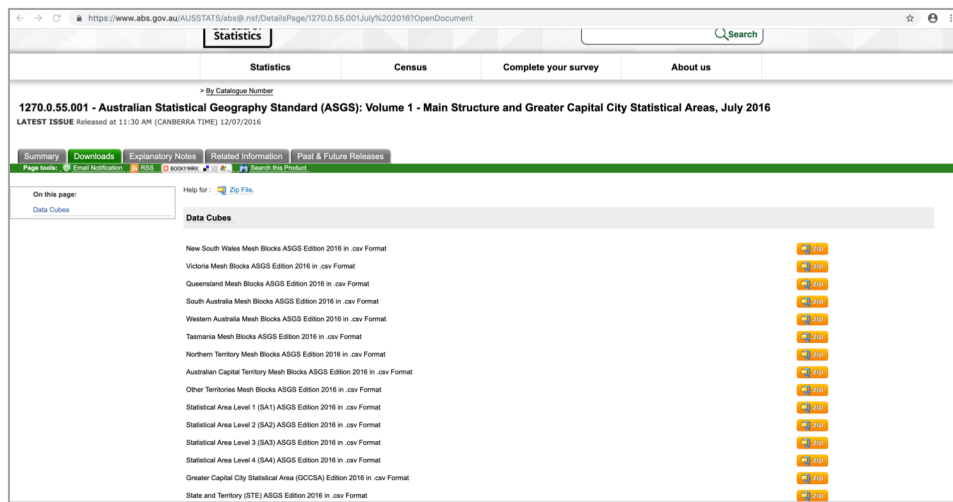
Replies

About SA1

- Statistical Areas Level 1 (SA1) - Geographical areas built from Mesh Blocks (MBs)
- SA1s aggregate to form Statistical Areas Level 2 (SA2) in the Australian Statistical Geography Standard (ASGS) Main Structure
- SA1s have generally been designed as the smallest unit for the release of census data and have a population of between 200 and 800 people with an average population size of approximately 400 people
- There are 57,523 spatial SA1 regions covering the whole of Australia without gaps or overlaps

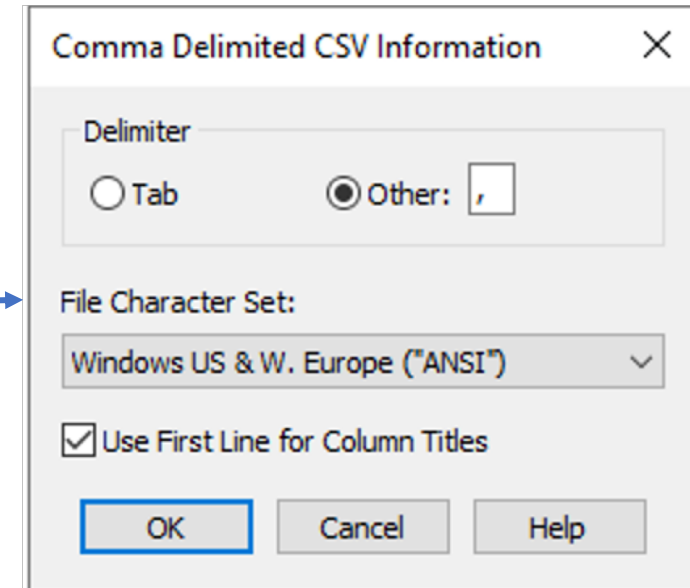
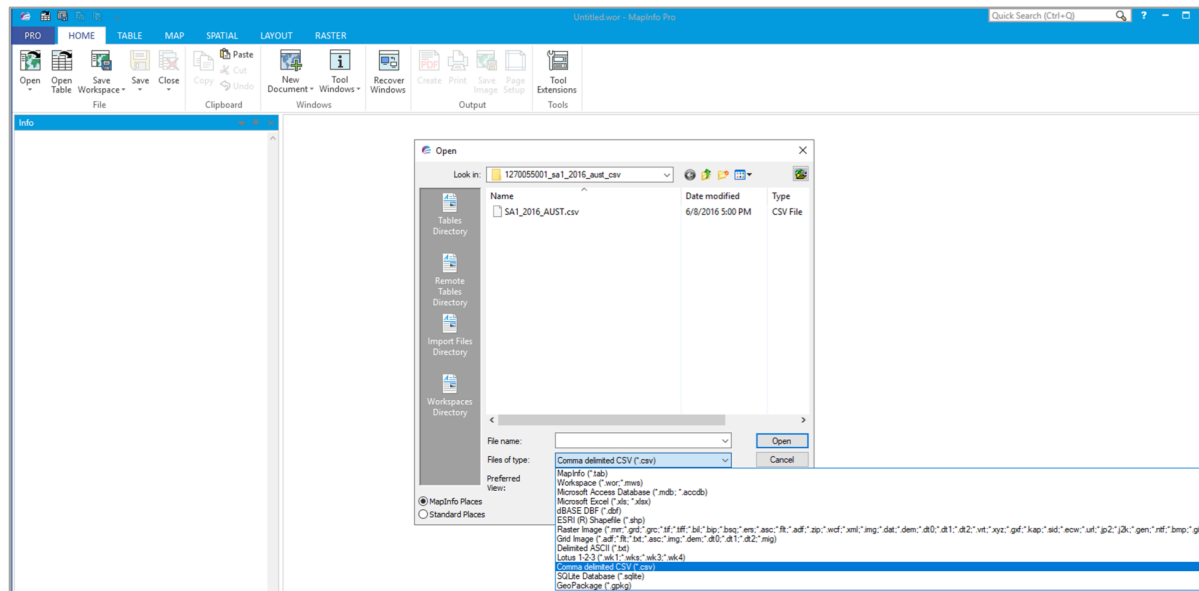
Data Download

- CSV Data can be downloaded from <https://www.abs.gov.au/AUSSTATS/abs@.nsf/DetailsPage/1270.0.55.001July%202016?OpenDocument>
- Unzip file to extract *.csv file
- CSV file holds non-spatial data i.e. no coordinate information to represent spatial data and hence only tabular view can be seen in MapInfo Pro



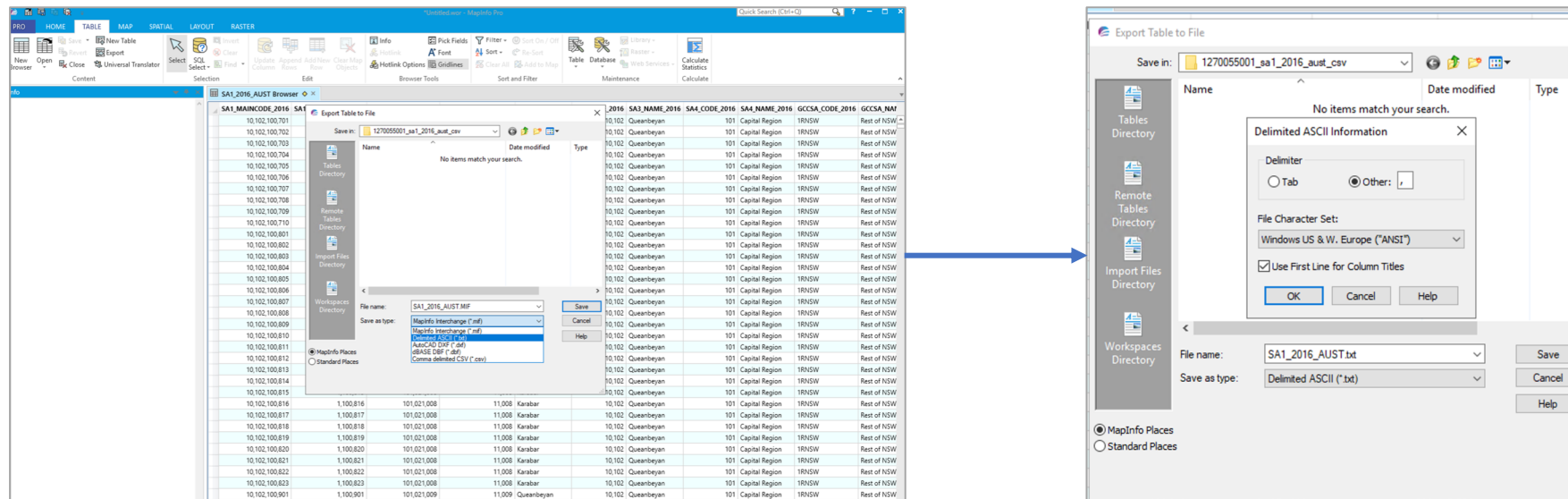
Convert *.csv to *.txt using MapInfo Pro

- Launch Open MapInfo Pro → Under **HOME** tab Go To “**Open Table**”
- Navigate to folder where data has been unzipped
- Under “**Files of Type**” select “**Comma Delimited CSV (*.csv)**” option
- Open *.csv file and **Comma Delimited CSV information** dialog box will be launched
- Specify **Delimiter** (which is comma here) and check box “**Use First Line for Column Titles**” as file has header information present and Click OK to create tab file



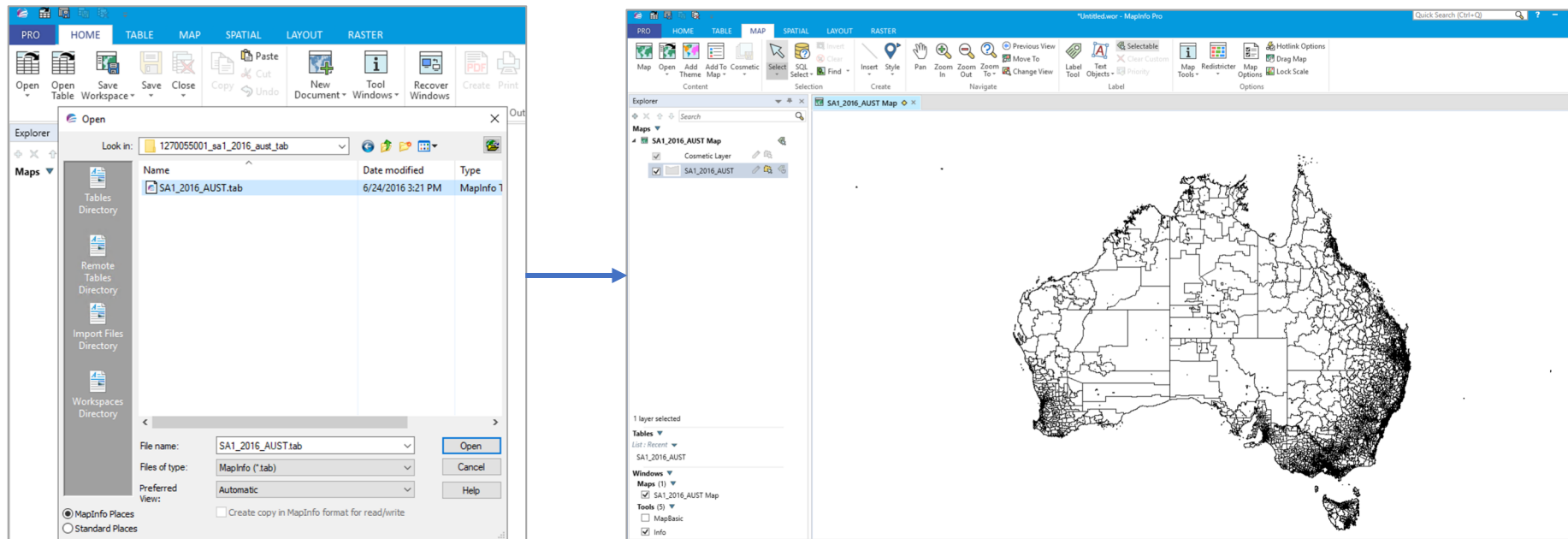
Convert *.csv to *.txt using MapInfo Pro

- Under **TABLE** tab select Export option
- Select file which need to be exported to *.txt file
- Under “**Files of Type**” select “**Delimited ASCII (*.txt)**” option and click save
- **Delimited ASCII Information** dialog box is launched where delimiter and header information can be defined
- Specify delimiter of choice and check box “**Use First Line for Column Titles**” to confirm file has header information as first row. Click Save to save csv to txt file.



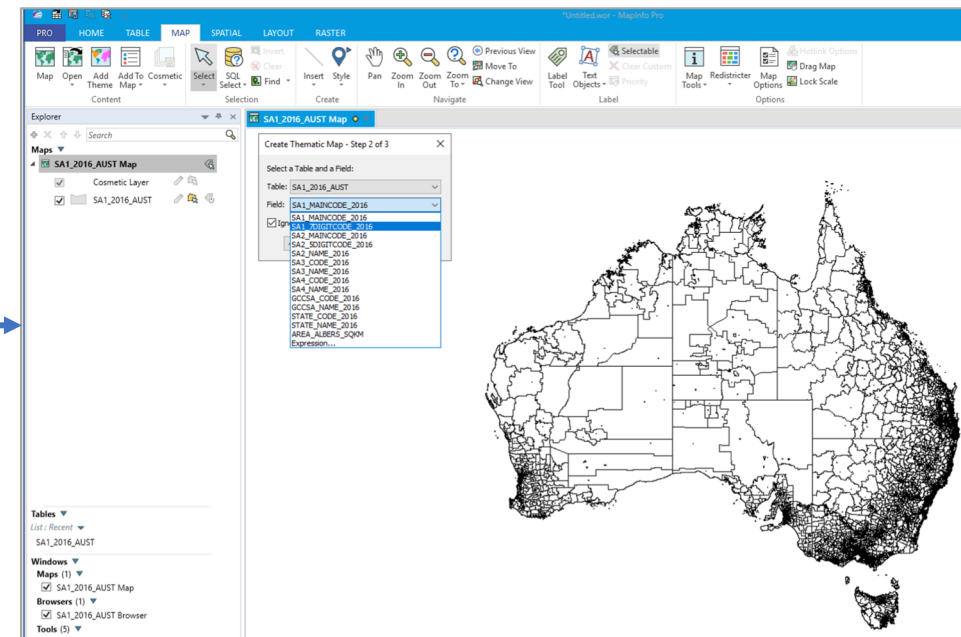
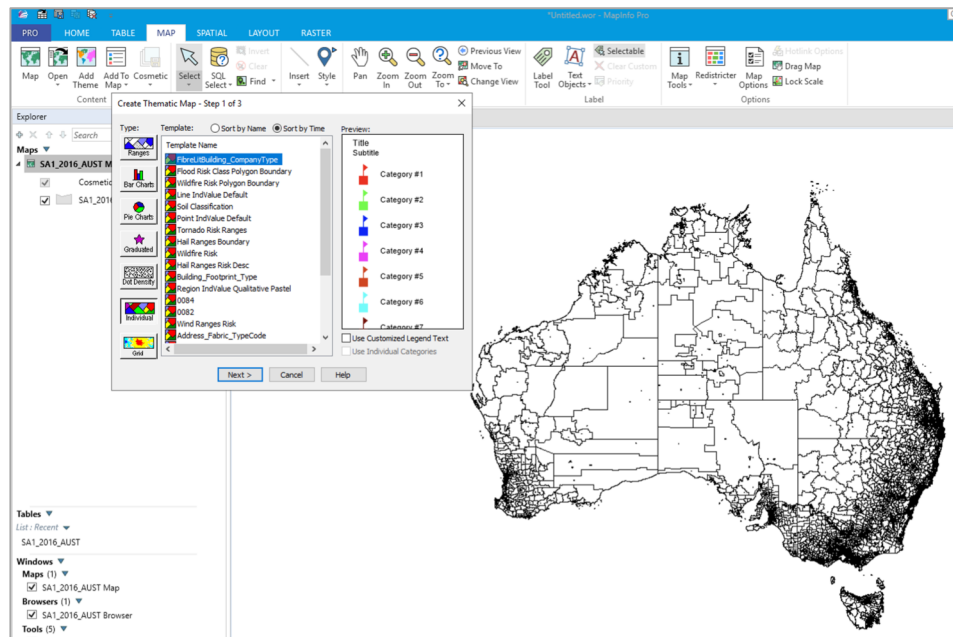
Create Thematic using SA1 data

- Download MapInfo Tab file from the ABS site @ <https://www.abs.gov.au/AUSSTATS/abs@.nsf/DetailsPage/1270.0.55.001July%202016?OpenDocument#Data>
- Other file formats such as ESRI Shapefile/MapInfo Interchange Format exists too which holds spatial information. These can be downloaded from the ABS website as well to generate thematic.
- Navigate to folder where data has been unzipped. Launch Open MapInfo Pro → Under **HOME** tab Go To **“Open Table”**
- Select MapInfo tab file and click Open



Create Thematic using SA1 data

- Choose the layer (**SA1_2016_AUST**) to base the map, and the field (FOR EXAMPLE: **SA1_7DIGITCODE_2016**) from which you want to obtain the data values (thematic variable).
- On the **MAP** tab, in the **Content** group, click **Add Theme** to open the **Create Thematic Map** wizard panel. Wizard Panel contains series of three dialog boxes to help you choose the type of thematic map you want, the tables and fields that will be used to construct the map, and a variety of options to customize your map.
- Click Individual Theme and select a template from the list. Click Next. Choose field on which we want to base the map from the drop-down list.



Create Thematic using SA1 data

- Click Next. This panel gives option to customize your thematic map using the Individual Theme, Styles, or Legend buttons. To go back to any of the earlier wizard panels to make changes, click Back until you come to the panel whose information you want to change. Once all settings are done, Click OK to create Individual Thematic Map. There are many kinds of thematic maps, but the process for creating each type of map is the same in MapInfo Pro.

