

# Site Mapper

## Version 2.4 Help

### About

Site Mapper can be used to create and export multiple maps based on an “site” index (parent) table. You can create any number of maps, from just a few to 1000s.

The site index layer can be a point, line or polygon layer. Maps can be exported to JPGs, PNGs, or PDFs. You can choose the PDF driver or output image resolution.

You can also create new map or layout windows and keep these on screen to check these before printing.

New in this release is support for two maps in layouts. This allows you to have a detailed map as well as an overview map.

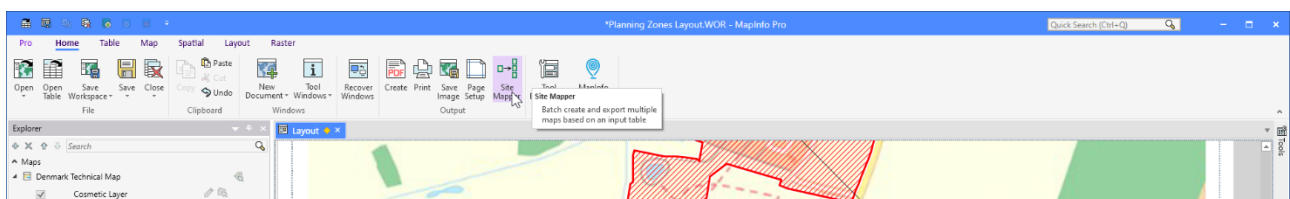
The selected site ID column from the site layer doesn't have to hold unique values. Site Mapper will include all records with the same site ID on the map. This is useful if your table holds multiple records for each site. You do however need to make sure these records aren't spread to wide so that they don't fit on the map.

### How to use Site Mapper

Firstly, you'll need to first create a **template** map which will be used to generate the individual maps. The template can be either a Mapper window or Layout window (Layout windows must contain at least one Mapper frame). The mapper must also contain the index site layer and should also contain any other background layers required.

If using a Layout window as the template, then you can also include layout frames such as title text, north arrow, images (e.g. logos) and legend items for the map.

Next click on the **Site Mapper** button that appears on the **Handy Tools** tab, the **Home** tab and/or the **Layout** tab.



This will open the **Site Mapper – Batch Printing Tool** dialog. This is where you configure your batch printing.

We will go through the different areas of the dialog below.

**Site Mapper - Batch Printing Tool**

**Template Window**

Export mapper or layout: Layout

Select template window: Layout

Select the Mapper or Layout window which will be used as a template for the individual 'site' maps. This template window will then be used to produce the individual 'site' maps.

**Layout Map Windows:**

Select Main Map: - Select Map Frame -

Select Secondary Map: - No Secondary Map -

Select the Mapper windows from the layout window to use. You must select a main mapper window and you can also select a secondary (overview) map. Zoom and pan for each can be controlled through the settings below.

**Sites Layer - Primary Map**

Site Layer:

Site ID Column:

Check for non-unique values in Site ID column: ☒

Add each site as new query layer in mapper: ☒

Use the style override and label properties of parent site layer (selected above) for the new child site layer: ☒

Turn off the parent layer (selected above): ☒

Select the 'parent' site layer (from the Mapper or Layout specified above) which includes the 'child' records which will be used to generate each new map. The tool can validate that the values in the Site ID column are unique if you expect them to be. Set the option to add each 'child' site as a layer in each new map. The 'child' site layer will be added at the same position in the layer order as the 'parent' layer. Set the option to replicate the style override symbology and label properties for the 'child' layer as the 'parent' layer.

**Map Pan and Zoom Settings - Primary Map**

Change site map extent to: Center of MBR

Zoom width, km: 5 Current zoom: ☒

Specify how you want to change the map extent relative to each 'child' site. Pan map to the center of the MBR, full extent (for polygons, polylines and multiple records) or don't change at all.

**Sites Layer - Secondary Map**

Site Layer:

Site ID Column:

Add each site as new query layer in mapper: ☒

Use the style override and label properties of parent site layer (selected above) for the new child site layer: ☒

Turn off the parent layer (selected above): ☒

Select the 'parent' site layer (from the 'Secondary Map' Frame specified above). This can be the same layer as in the 'Primary Map' but it can also be a different layer. The values in the Site ID column of this layer must be the same as in the primary site layer as they are used to filter out the 'child' records. The other settings are similar to the settings for the 'Primary Map'.

**Map Pan and Zoom Settings - Secondary Map**

Change site map extent to: Don't Change

Zoom width, km: 25 Current zoom: ☒

Specify how you want to change the map extent relative to each 'child' site. Pan map to the center of the MBR, full extent (for polygons, polylines and multiple records) or don't change at all.

☒ Clone main window for each 'child' site and keep these cloned windows open. Not recommended for many sites.

To add values from any column in the site table on the layout as text (such as the map title), you can use Smart Text in a text frame on to the layout. The Smart Text should be '\$mb(SMGetSiteValue('City'))' where 'City' is the column name to read the value from. Use '\$mb(SMGetSiteValueErr('City'))' to see potential errors accessing the values. You can combine the Smart Text with fixed text. The Smart Text will return an empty string until Site Mapper starts processing the output. For a record with 'New York' in column 'City', the text 'City: \$mb(SMGetSiteValue('City', 1, 0))' would show as 'City: New York'. Make sure the text frame is large enough to accommodate the full text from the Site table.

Or you can add an empty text frame on to the layout and then include the column number in the NAME for the text frame. The column number must be in the format '<COL#>', where # is the column number (note '<COL#>' is case sensitive). For example the text frame name could be 'State of <COL5> Map' and the text frame will be updated to 'State of New York Map' if column 5 contains the value 'New York'. Note the text frame name is modified by right clicking on the frame and selecting Frame Properties. Make sure the empty text frame is large enough to accommodate the full text.

Add delay before next 'child' site: None ? Add delay before printing: 2 secs ? OK Close

When you click on the OK button, the batch printing process will begin. The output will depend on the configurations you chose.

Also notice that Site Mapper will remember the settings across settings. All settings but the windows and site layer and columns will be remembered.

## Template Window

**Template Window**

Export mapper or layout: Layout

Select template window: Layout

Select the Mapper or Layout window which will be used as a template for the individual 'site' maps. This template window will then be used to produce the individual 'site' maps.

In the **Template Window** group, you can select the type of window to use as your template window.

Note that the **Export mapper or layout** option will be disabled if you only have one window type open.

The list **Select template window** lets you select the window to use from a list of open windows of the given type.

## Layout Map Windows

**Layout Map Windows:**

Select Main Map: Denmark Technical Map

Select Secondary Map: Planning\_Zones,DTK\_Skærmkort Map

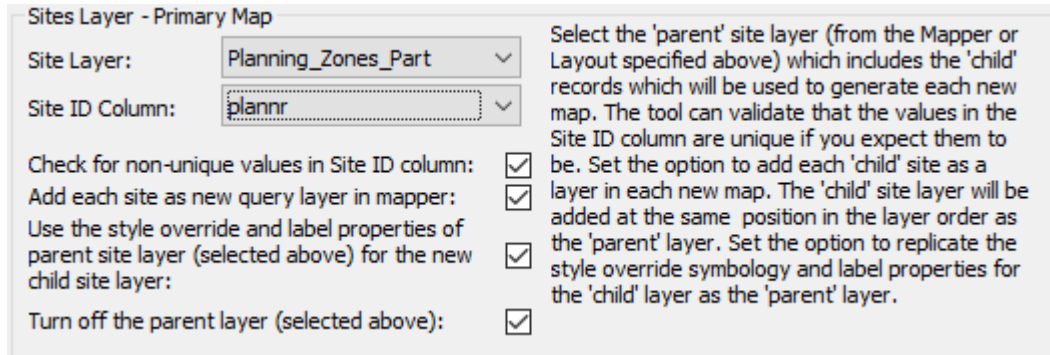
Select the Mapper windows from the layout window to use. You must select a main mapper window and you can also select a secondary (overview) map. Zoom and pan for each can be controlled through the settings below.

If you selected a layout as your template window, you will have to select which embedded maps to use. Note that you can now select a **Main Map** and a **Secondary Map**.

The **Main Map** is, as the name says, the main or primary map. It's from the map that you select the layer you want to loop through to create your batch printing.

The **Secondary Map** would typically be an overview map that can be controlled by the first map. You can also specify that the Secondary map keeps its initial zoom and center.

### Sites Layer – Primary Map



When you have selected either your template window as a map or the primary map window in your layout, the list **Site Layer** will get populated with the possible layers from the selected map window.

Next specify the index site layer ("parent" layer). For example, you may have a site table with 150 suburb boundaries.

Now select the **Site ID Column** too. The Site ID column should identify the records that should be included on each map.

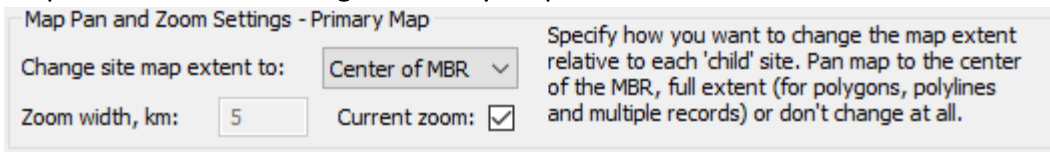
Site Mapper will group the selected layer by the selected column and so calculate the number of maps to create. One map can hold multiple records from the Site Layer. Do make sure that these are close enough to fit on the maps you are creating.

The values from the Site ID Column will be used to select the records from the Site Layer for each map. These values will also be used to select the records from a potential secondary site layer. In many cases the two site layers will point to the same table but that might not always be the case.

If you check the option **Check for non-unique values in Site ID Column**, Site Mapper will make sure all the values in the selected Site ID column are unique. If they aren't you will be prevented from continuing. This check helps you ensure you only have one record for each value if that is how your data has been arranged.

Now, choose whether to add each site record (e.g. each individual suburb area) as a new query layer ("child" layer) in the mapper. Doing this will allow the site feature (e.g. suburb boundary) to be highlighted on the map. You can choose whether to use the same style override symbology and label properties for the child layer as has been specified for the parent layer. The child layer will also be added to the new map in the same position in the layer order as the parent layer. If you have not already turned off the parent layer, you can set the tool to turn it off.

## Map Pan and Zoom Settings – Primary Map



Map Pan and Zoom Settings - Primary Map

Change site map extent to:  Specify how you want to change the map extent relative to each 'child' site. Pan map to the center of the MBR, full extent (for polygons, polylines and multiple records) or don't change at all.

Zoom width, km:  Current zoom: ☒

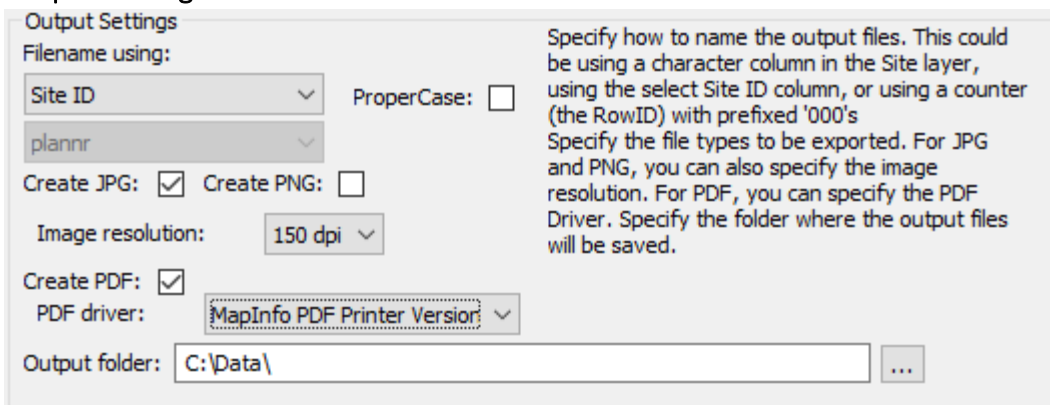
Next specify how you want the tool to set the extents of the primary maps. You can have the tool pan or zoom the map to the child layer.

The tool can pan the map to the center of the MBR (Minimum Bounding Rectangle) for each site and keep the current zoom or change the zoom to a specified value. If the child layer contains polygons, polylines or multiple records, the tool can zoom the map to the full extent of each site object (e.g. zoom to the extent of each suburb boundary).

The zoom width in **Zoom width, km** is the current zoom of the map. If you check **Current zoom**, the zoom will not change.

Alternatively, the tool can keep the current map extent. For example, you have a map of an entire country and you want to create individual maps which highlights each state/province in the country without changing the original extent.

## Output Settings



Output Settings

Filename using:  ProperCase: ☐ Specify how to name the output files. This could be using a character column in the Site layer, using the select Site ID column, or using a counter (the RowID) with prefixed '000's

Specify the file types to be exported. For JPG and PNG, you can also specify the image resolution. For PDF, you can specify the PDF Driver. Specify the folder where the output files will be saved.

Create JPG: ☒ Create PNG: ☐

Image resolution:

Create PDF: ☒

PDF driver:

Output folder:  ...

Now specify the output settings. First you can choose between three ways to name the resulting files. You can use the Site ID, the counter or a separate character column. Any of these can be converted to proper case if required.

Choose the output format and output folder path.

For JPG/PNG files, you can set the output resolution.

For PDF files, you can choose between the MapInfo PDF driver, Microsoft Print to PDF or Adobe Acrobat driver (if installed). At this time, these drivers are hardcoded in the MapBasic code, but can be changed by editing the code. If required, we can add additional PDF Driver but let us know via GitHub (see under *Further Development*) or add these yourself via the source code.

You don't have to create any output files. For this work, you do however need to check the option **Clone main window for each 'child' site**.

## Sites Layer – Secondary Map

Sites Layer - Secondary Map	
Site Layer:	Planning_Zones
Site ID Column:	plannr
Add each site as new query layer in mapper:	<input checked="" type="checkbox"/>
Use the style override and label properties of parent site layer (selected above) for the new child site layer:	<input checked="" type="checkbox"/>
Turn off the parent layer (selected above):	<input checked="" type="checkbox"/>

Select the 'parent' site layer (from the 'Secondary Map' Frame specified above). This can be the same layer as in the 'Primary Map' but it can also be a different layer. The values in the Site ID column of this layer must be the same as in the primary site layer as they are used to filter out the 'child' records. The other settings are similar to the settings for the 'Primary Map'.

If you have selected a secondary map, you must now select the secondary site layer. If you don't select any, the secondary map will not show any records highlighted and the secondary map will not change to reflect the current child site.

The secondary site layer can be the same layer/table as the primary site layer. But it can also be a different table.

The zoom and pan of the map will be controlled by the selected 'child' site from the primary site layer.

You will also have to select a **Site ID Column** too. The values from the primary Site ID Column will be used to select the records from the secondary Site Layer for each map.

Now, choose whether to add each site record (e.g. each individual suburb area) as a new query layer ("child" layer) in the mapper. Doing this will allow the site feature (e.g. suburb boundary) to be highlighted on the map. You can choose whether to use the same style override symbology and label properties for the child layer as has been specified for the parent layer. The child layer will also be added to the new map in the same position in the layer order as the parent layer. If you have not already turned off the parent layer, you can set the tool to turn it off.

## Map Pan and Zoom Settings – Secondary Map

Map Pan and Zoom Settings - Secondary Map	
Change site map extent to:	Don't Change
Zoom width, km:	25
Current zoom:	<input checked="" type="checkbox"/>

Specify how you want to change the map extent relative to each 'child' site. Pan map to the center of the MBR, full extent (for polygons, polylines and multiple records) or don't change at all.

Next specify how you want the tool to set the extents of the primary maps. You can have the tool pan or zoom the map to the child layer.

The tool can pan the map to the center of the MBR (Minimum Bounding Rectangle) for each site and keep the current zoom or change the zoom to a specified value. If the child layer contains polygons, polylines or multiple records, the tool can zoom the map to the full extent of each site object (e.g. zoom to the extent of each suburb boundary).

The zoom width in **Zoom width, km** is the current zoom of the map. If you check **Current zoom**, the zoom will not change.

Alternatively, the tool can keep the current map extent. For example, you have a map of an entire country and you want to create individual maps which highlights each state/province in the country without changing the original extent.

## Clone Main Window

☒ Clone main window for each 'child' site and keep these cloned windows open. Not recommended for many sites.

If you check this option Site Mapper can create new map or layout windows for all the sites in your site layer. This is useful if you have a few sites that you want to validate before printing, or if you want to manually modify these slightly before printing.

Note that certain dynamic texts in your layout will have been converted to static texts as a dynamic text referring to a child site would fail to read the right values from the child site.

## Delays

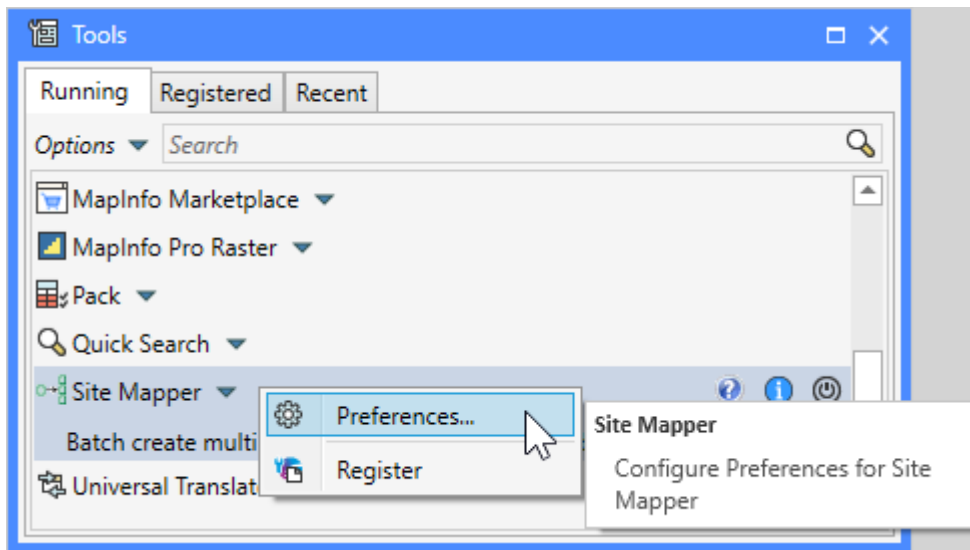
Add delay before next 'child' site: None ▾ ? Add delay before printing: 2 secs ▾ ?

There is an option at the end to add a short delay (e.g. 2 seconds) before moving on to the next site. This is to allow the PDF driver time to finish exporting the map. This appears to have been an issue in the past, where the tool may crash part way through batch printing.

Similar you can also add a delay before printing to allow MapInfo Pro to finish rendering the windows. This can be used if you experience issues with images or PDF files not been completely rendered.

## Preferences

You can access the **Preferences** dialog for Site Mapper via the context menu of the tool by right-clicking on Site Mapper in the **Tools** window.

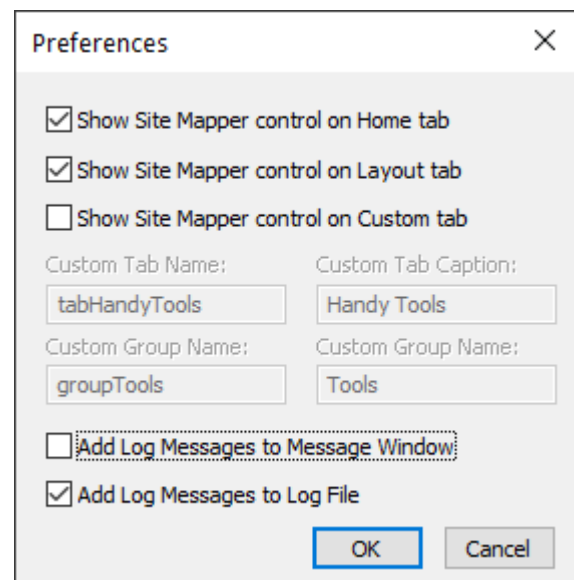


The **Preferences** dialog lets you control where you want the display the Site Mapper control on the Ribbon. You can add it to the Home tab, the Layout tab and to a custom tab of your choice.

By default the Custom tab is Handy Tools which has been the default tab for Site Mapper.

You can control the Caption (the name displayed) as well as the internal name of the Tab and Tab Group where you want to display the Site Mapper control.

You can also control if you want to add log messages to the Message window and/or to the Log file using the two checkboxes at the bottom of the dialog.

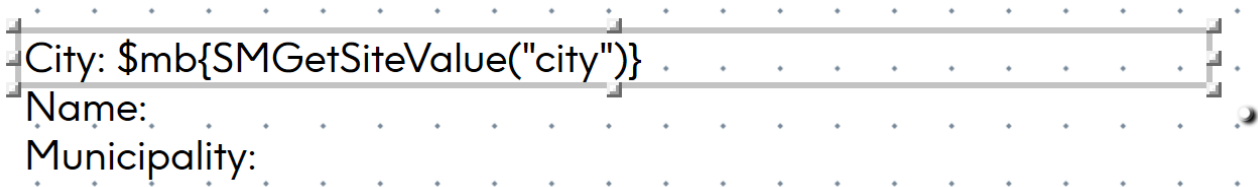


## Adding Site Values to the Layout

If using a Layout window as the template, you can set whether to update one or more text frames on the layout window (such as the map title). As well as the title text, the Layout window could include text frames with site statistics or details. Right click on the empty text frames and name them with text which includes the column reference in the format "<COL#>". For example, "Map of <COL1> Region", "Population size: <COL2>", etc. Note the column reference (<COL#>) is case sensitive. Make sure the empty text frame is large enough to accommodate the full updated text string. You can set the text style and font size for each empty text frame.

Another options for adding values from the current child site to the layout has been added. Similar to above, you can insert a specific text string. To get the value from the column City, you can insert this string into the text frame: `$mb{SMGetSiteValue("City")}`. You can combine this string with a static text too: `City: $mb{SMGetSiteValue("City")}`.





If you run into issues using this method, try using the additional method that will show potential errors:

```
$mb{SMGetSiteValueErr("City")}
```

Do note that this alternative method, require you to insert the text in the text frame itself, not as the name of the text frame.

## Troubleshooting

There is a known issue where dynamic labels which have been included in the template do not get printed in the output files. This issue was fixed in MapInfo Pro v17.0.3 (2019).

## Further development

We have a list of further things we want to add to Site Mapper.

- Support for setting cartographic scale in addition to map zoom
- Remember earlier selected map frames, tables and columns – they are now captured and stored but not used when opening the dialog
- Split the dialog into two: One for the primary map, and one for the secondary, when needed
- Switch to using Layer Filter for MapInfo Pro v2021
- Automatically match second site table to first site table if possible
- Option to not use site table in the second map. Potentially allow the query from the primary map to be added to the secondary map too.
- Add zoom/pan type for the second map to use first site table
- Add option to show extent of first site map on the second site map
- Add an option to print or export all open layout windows.
- Let the user select from a list of values what value to use as start value and be able to specify the number of sites to process. Or specify an interval of sites to process, say 1-99.

If you have further ideas, you can add these as issues on GitHub where you also can find the source code:

[github.com/PeterHorsbollMoller/mbSiteMapper](https://github.com/PeterHorsbollMoller/mbSiteMapper).