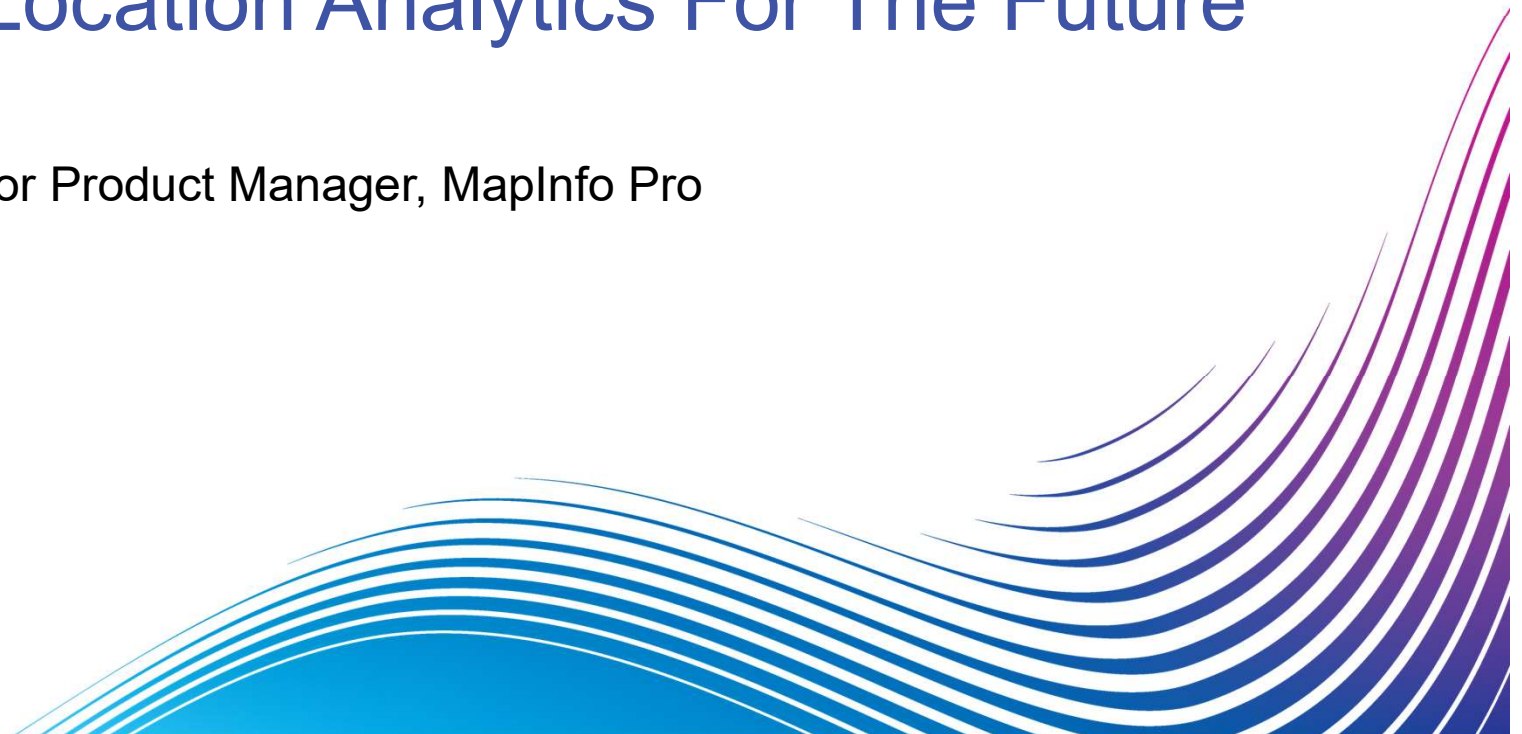


Mapinfo Pro

Flexible Location Analytics For The Future

Jim Stone, Senior Product Manager, MapInfo Pro



Agenda

What is Flexible Location Analytics?

MapInfo Pro Roadmap 2019 and Beyond

SQL Select Dialog Overhaul (Peter Horsboll Moller)

Tech Support Update (Julia Steinecker)

Flexible Enterprise Location Analytics

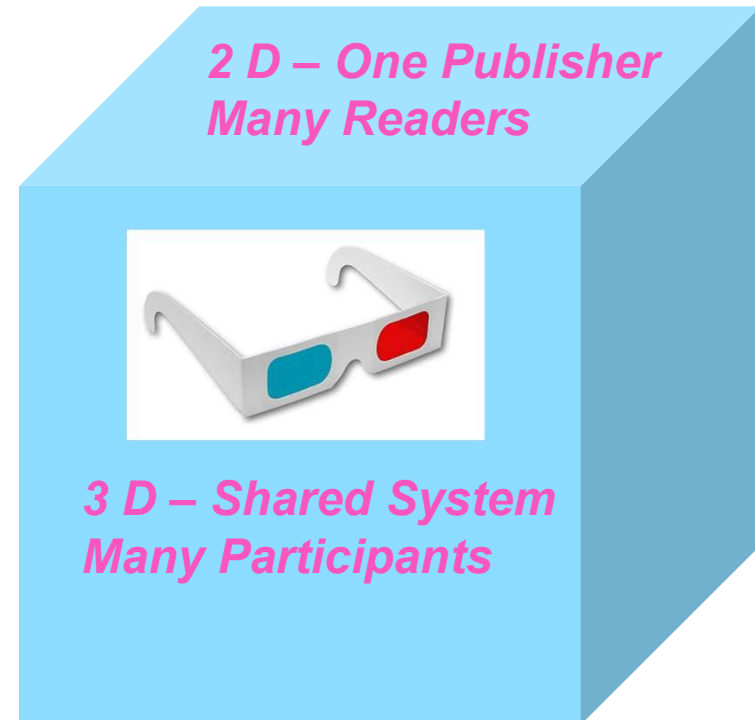
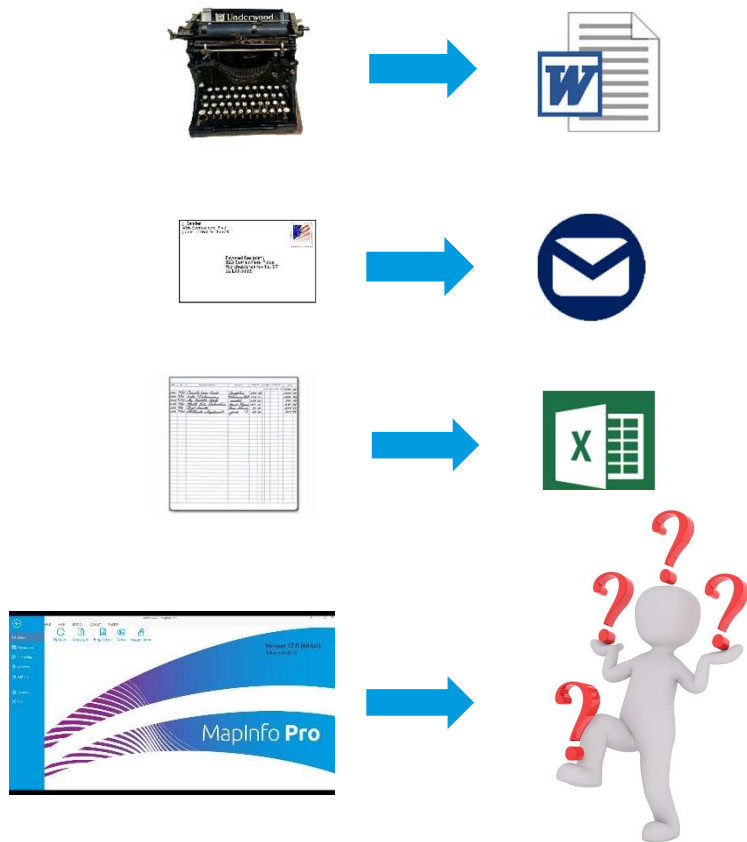
The background of the slide is a gradient from blue to purple. In the bottom right corner, there are several thin, wavy, concentric lines that create a sense of motion or data flow, transitioning from blue to purple.

What is Enterprise Location Analytics?

Definitions

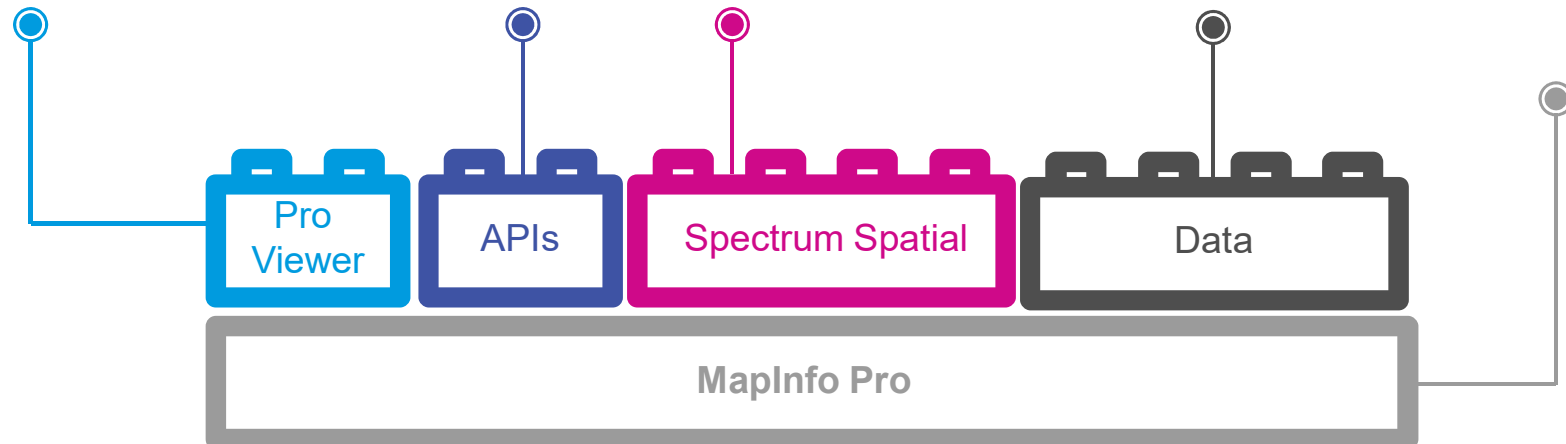
1. **Enterprise** (adjective) – pertaining to the *collaborative distribution of work* across an organization with the goal of *maximizing the quality of decision outcomes* by utilizing *diverse skills and efficient processes*.
2. **Location Analytics** (noun) – the process of *combining people, data, and software-based systems to improve location-based decision outcomes* in an organization.

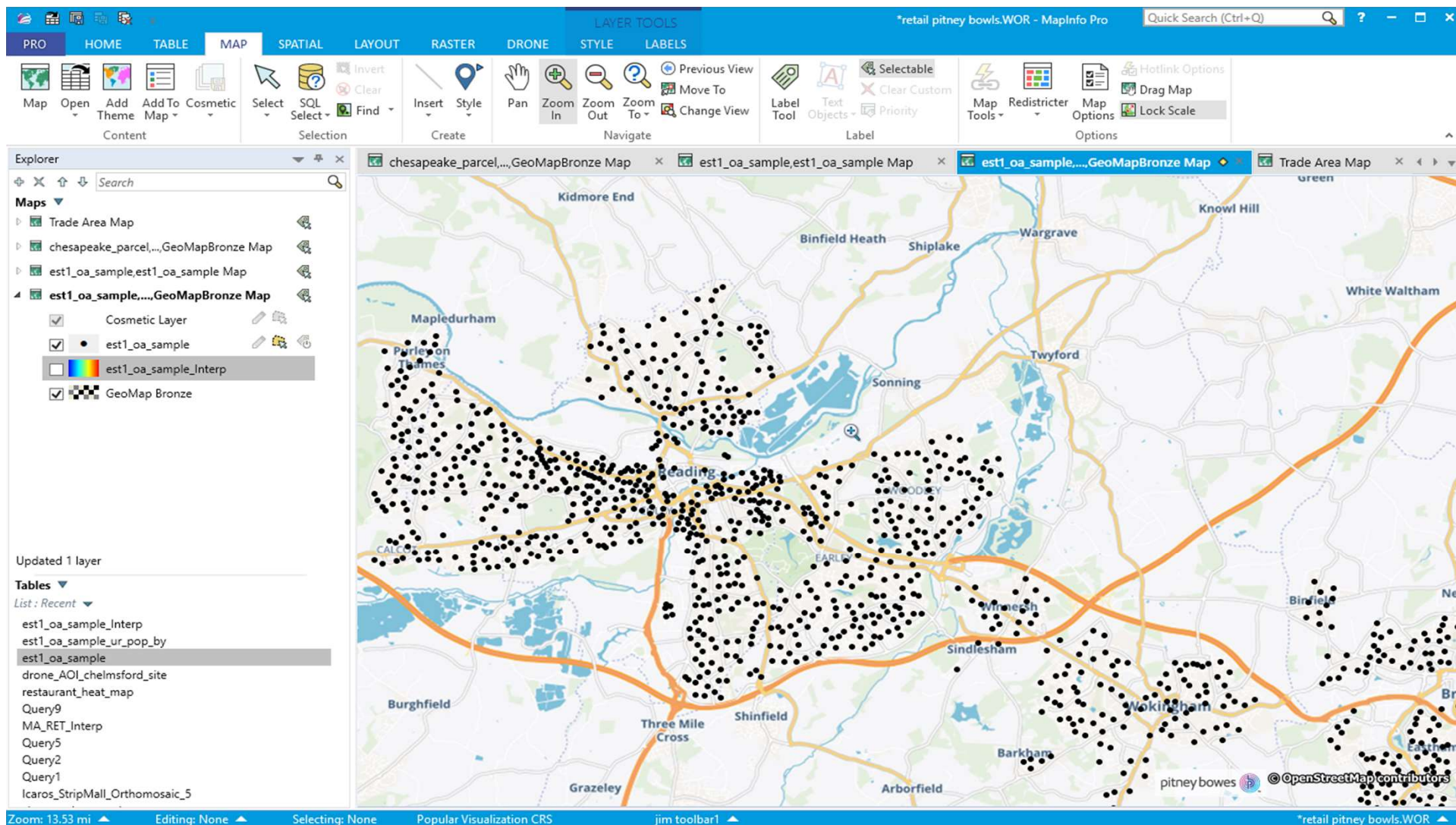
What is Enterprise Location Analytics?

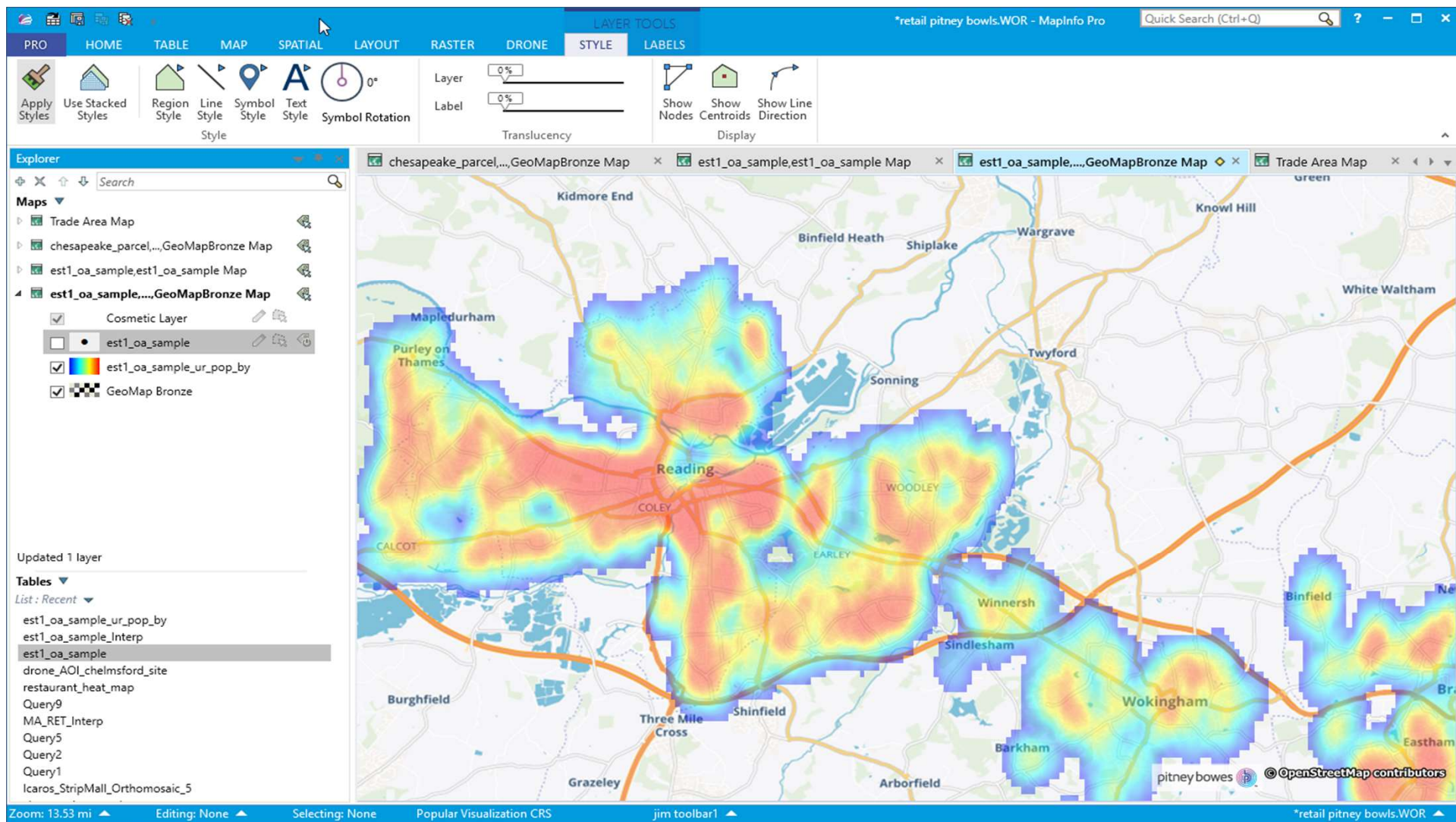


Pitney Bowes Approach to Enterprise Location analytics (ELA)

- Pro Viewer
- Used by Business Users
- Extends Pro usage
- Light weight to support map viewing
- Add value to MapInfo Pro
 - GeoZones
 - Geocoding
 - GeoEnrich - POIs (coming soon)
- Enables Location Analytics in the Enterprise
- Web Mapping
- Used by Business Analysts to Analyze Spatial Data
- Extensibility
- Software & Data Marketplace
- Some Free Datasets
- Support Vertical Use Cases
- Core to ELA
- Desktop GIS
- User persona is expanding from GIS > BA/Self Serve
- ~100,000 users globally







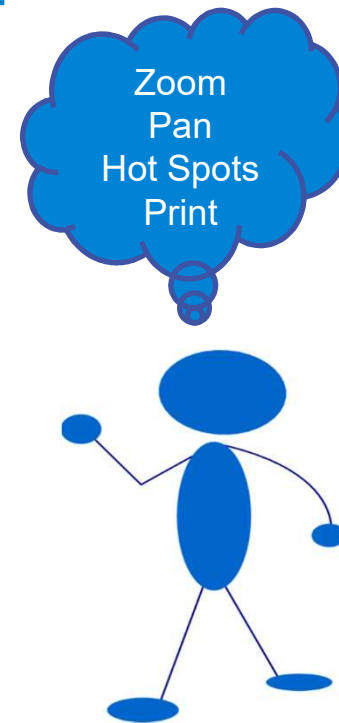
Different Versions for Different User types



GIS Analyst
MapInfo Pro



Business Analyst
MapInfo Explorer



Business User
MapInfo Pro Viewer

3 Year Term Licensing for New Customers – Starts July 1, 2019

- Over 30% less expensive than Perpetual License
- More flexible for organizations with changing roles and needs based on projects and business cycles
- How it works:
 - Upfront payment for license and S&S (maintenance) for year 1
 - S&S optional in years 2 and 3

Roadmap

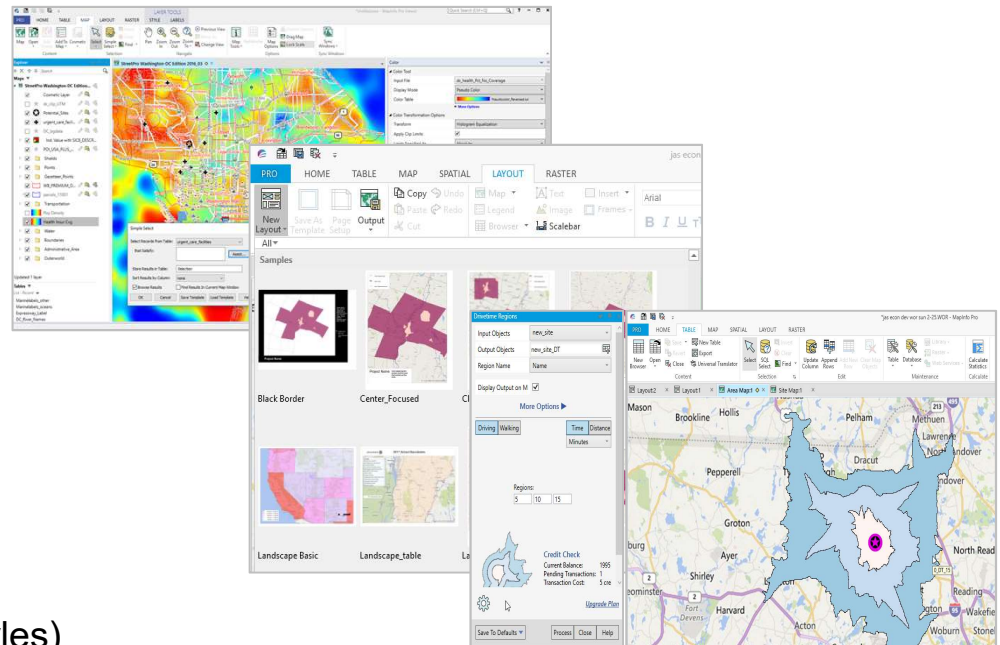


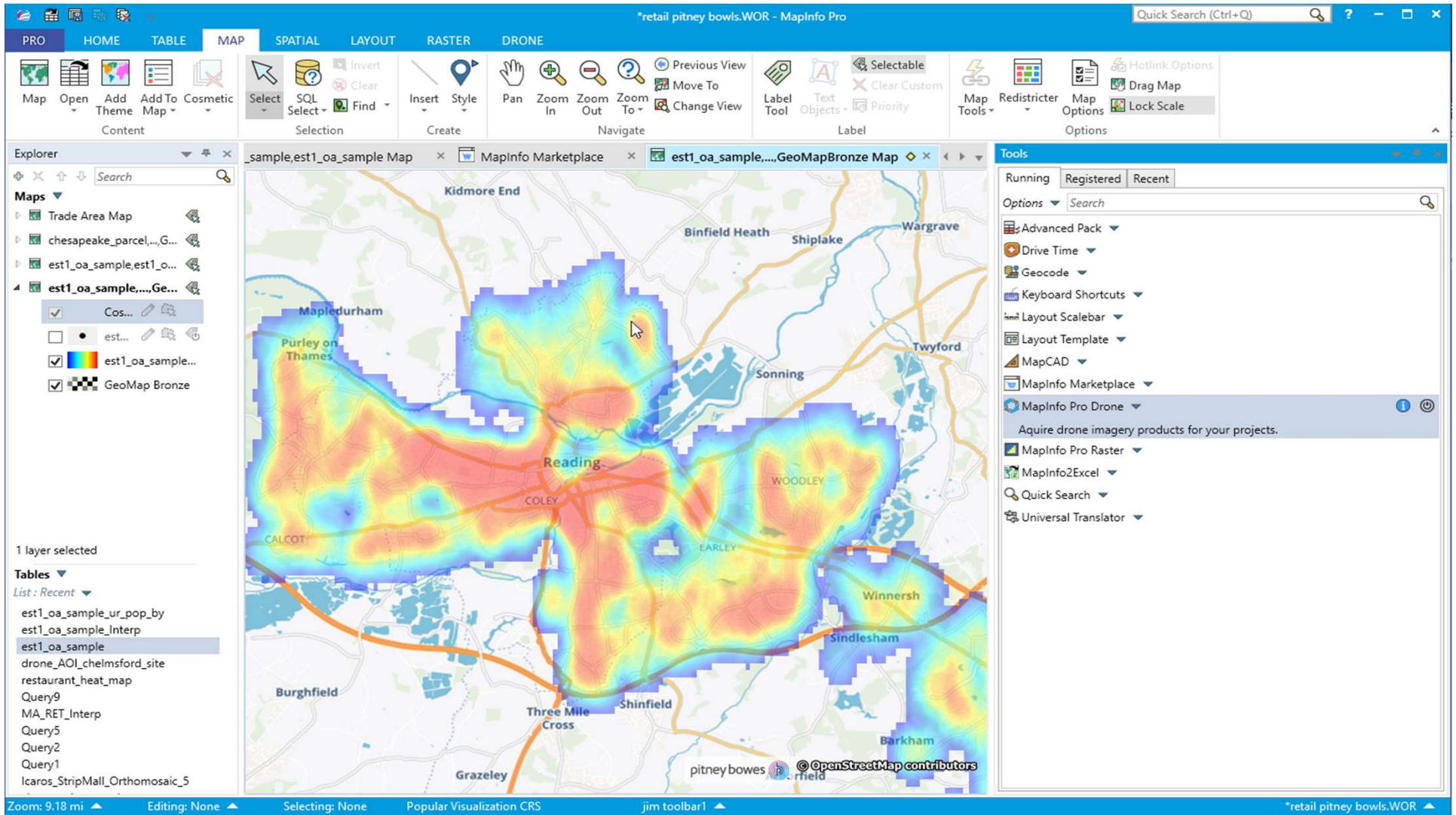
MapInfo Pro 2019



Release schedule

- V 17.03 - **June 4, 2019**
 - [MapInfo Marketplace Preview](#)
 - [Customizable Keyboard Shortcuts](#)
 - [Python Support \(2 ways\)](#)
 - [MapInfo Pro Drone add-in](#)
 - GDAL for Native X, MRR (read)
 - Over 20 Customer Bug Fixes
- V 2019 October 2019
 - MapInfo Marketplace Release
 - SQL Select Dialog Overhaul
 - Layout Improvements (line and fill styles)
 - [Heat Mapper Tool](#)
 - POI Downloader App





PROHOMETABLEMAPSPATIALLAYOUTRASTERDRONE

Open

Open Table

Save Workspace

Save

Close

File

Copy

Paste

Cut

Undo

New Document

Tool

Windows

Recover Windows

Create

Print

Save Image

Page Setup

Excel

Excel

Tool Extensions

MapInfo Marketplace

Tools

Clipboard

Windows

Output

Explorer

Search

Maps

Trade Area Map

chesapeake_parcel,...,G...

est1_oa_sample,est1_o...

est1_oa_sample,...,Ge...

CoS...

est...

est1_oa_sample...

GeoMap Bronze

1 layer selected

Tables

List: Recent

est1_oa_sample_ur_pop_by

est1_oa_sample_Interp

est1_oa_sample

apBronze Map

est1_oa_sample,est1_oa_sample Map

MapInfo Marketplace

est1_oa_sample,...,GeoMapBronze Map

Trade Area Map

MapInfo Marketplace Preview

Home

Category

Featured Products

Batch export to CSV

Icaros Drone Imagery

Mask

EXCEL

apInfo2Excel

Data Analysis

Data Conversion

Mapper Tools

Search Tools

Spatial

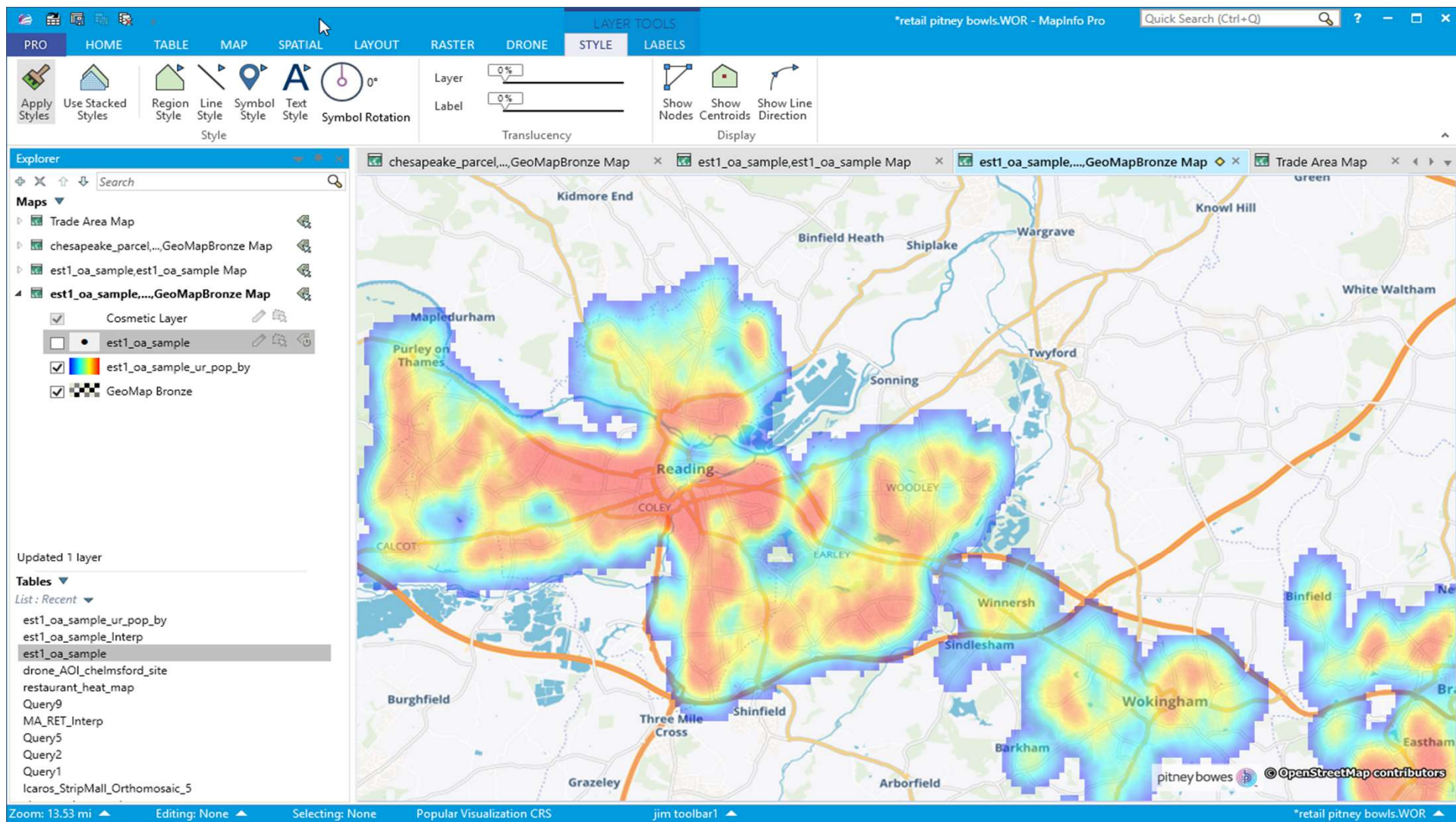
Visualization

Workspace Management

*retail pitney bowls.WOR - MapInfo Pro

Quick Search (Ctrl+Q)

*retail pitney bowls.WOR



PROHOMETABLEMAPSPATIALLAYOUTRASTERDRONE

MapOpenAdd ThemeAdd To MapCosmetic

SelectSQL SelectFind

InsertStyle

PanZoom InZoom OutZoom To

Previous ViewMove ToChange View

Label ToolText ObjectsLabel

SelectableClear CustomPriority

Map ToolsRedistricterMap Options

Hotlink OptionsDrag MapLock Scale

Explorer

Search

Maps

- Trade Ar...
- chesape...
- est1_oa...
- est1_oa...

1 layer selected

Tables

- List: Recent
- est1_oa_sample_ur_pop
- est1_oa_sample_Interp
- est1_oa_sample

Keyboard Shortcuts

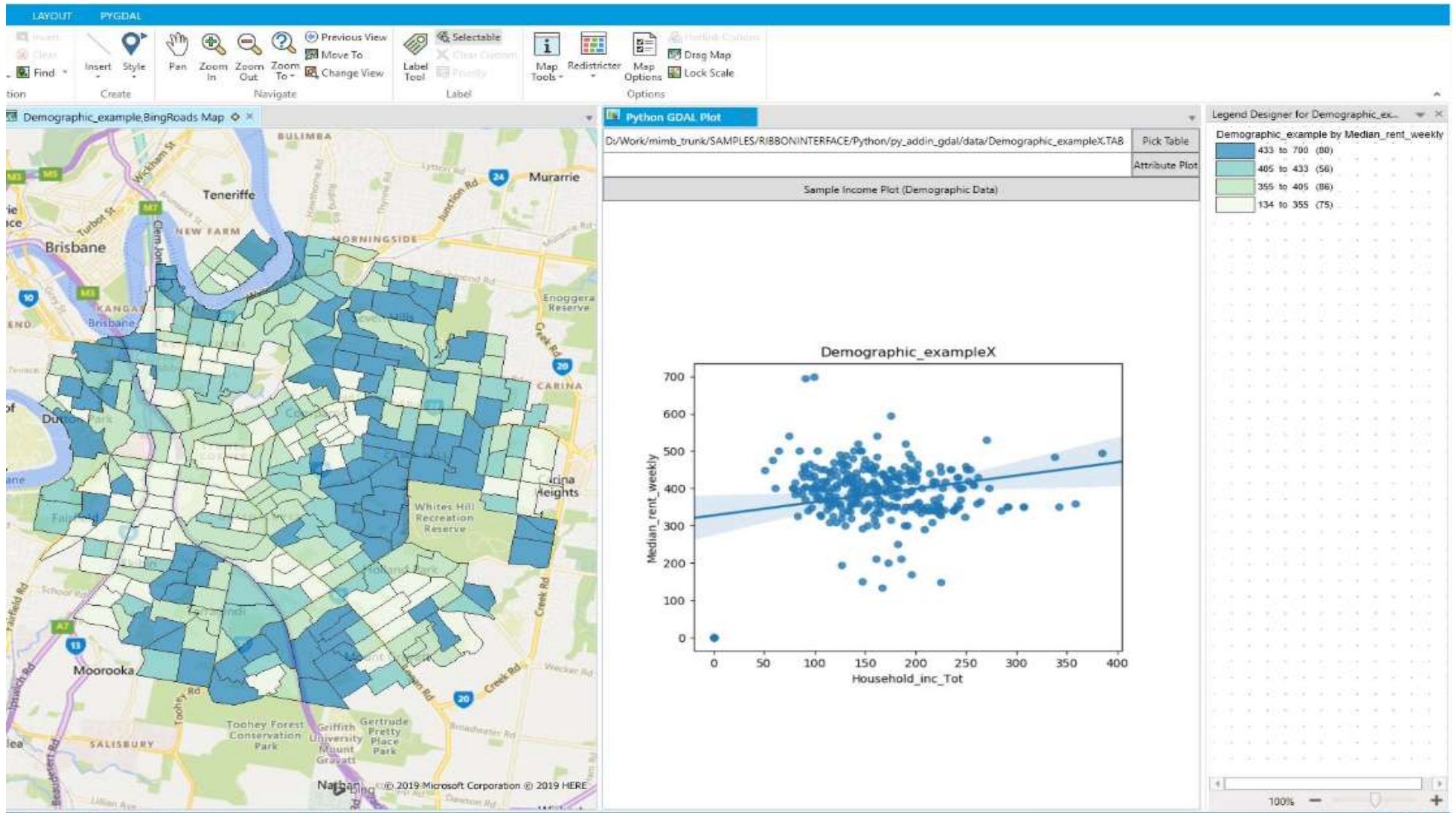
Application ShortcutsWindow Shortcuts

Search

| Command Id | Command | KeyGesture | MenuItemText | MenuItemToggleText | ToolTipDescription |
|------------|----------------------|--------------|----------------------|----------------------|---------------------------------------|
| | SaveCurrentWorkspace | Ctrl+Shift+S | Save Workspace | Save Workspace | Save Current Workspace (Ctrl+Shift+S) |
| | NewTable | Ctrl+N | New Table | New Table | New Table (Ctrl+N) |
| | OpenTable | Ctrl+O | Open Table | Open Table | Open Table (Ctrl+O) |
| | CloseTable | | Close Table | Close Table | Close Table |
| | CloseAll | | Close All | Close All | Close All |
| | SaveTable | Ctrl+S | Save Table | Save Table | Save Table (Ctrl+S) |
| | SaveCopyAs | | Save Copy As | Save Copy As | Save Copy As |
| | AddWorkspace | Ctrl+Shift+A | Insert Workspace | Insert Workspace | Insert Workspace (Ctrl+Shift+A) |
| | SaveWorkspace | | Save Workspace As | Save Workspace As | Save Workspace As |
| | RunMapBasic | Ctrl+U | Run MapBasic Program | Run MapBasic Program | Start a MapBasic Application (Ctrl+U) |
| | PageSetup | | Page Setup... | Page Setup... | Page Setup |
| | Print | Ctrl+P | Print | Print | Print (Ctrl+P) |
| | Exit | Alt+F4 | Exit | Exit | Exit (Alt+F4) |
| | OpenDBMS | | Open DBMS | Open DBMS | Open DBMS |
| | SaveQuery | | Save Query | Save Query | Save Query |
| | CloseDBMS | | Close DBMS | Close DBMS | Close DBMS |

Restore to DefaultsOKCancelHelp<-- Basic

Zoom: 13.53 miEditing: NoneSelecting: Nonejim toolbar1*retail pitney bowls.WOR



PROHOMETABLEMAPSPATIALLAYOUTRASTERDRONESTYLELABELS

Manage Account

Area Of Interest - Drone Project

Launch Drone Project

Analytics Project

chESApeake_parcel,.....

☒Cos...

☒che...

☐Drone Image 5...

☒Drone Image 1...

☒BingHybrid_2

☒GeoMap Bronze

est1_oa_sample,est1_o...

est1_oa_sample,...Geo...

Updated 1 layer

Tables

List: Recent

est1_oa_sample_ur_pop_by

est1_oa_sample_Interp

est1_oa_sample

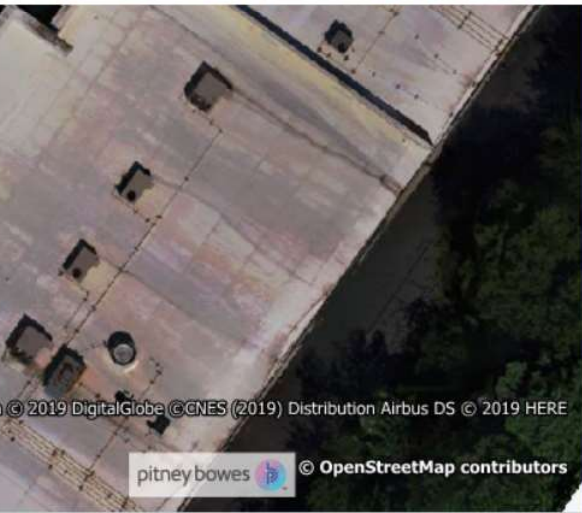

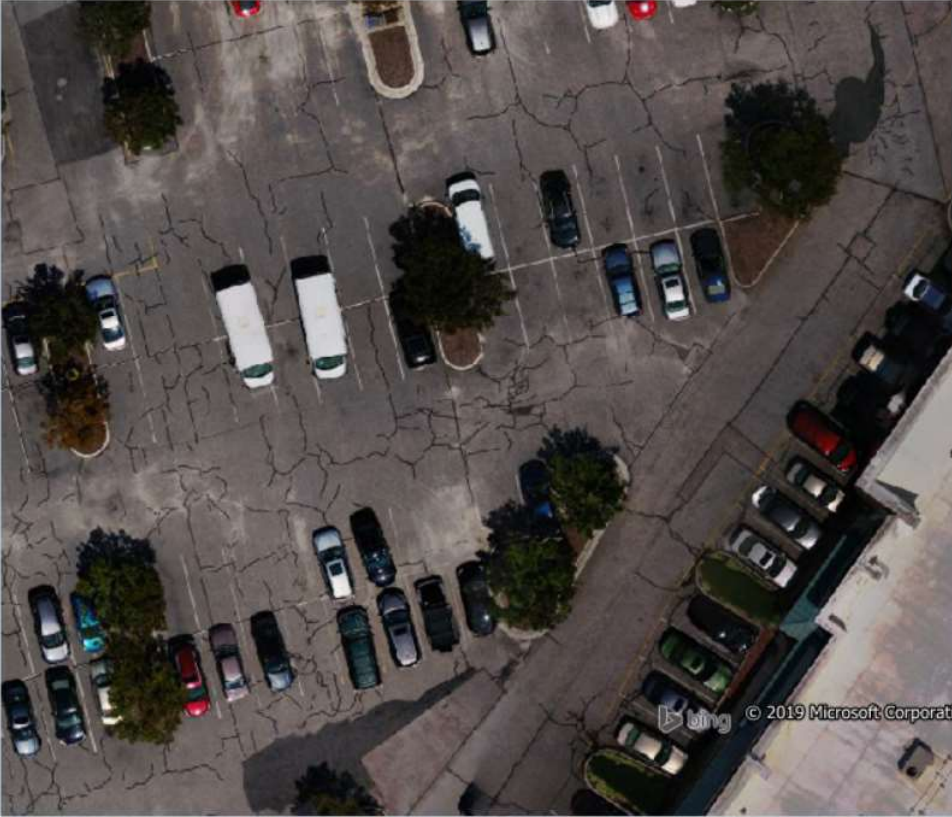
drone_AOI_chelmsford_site

restaurant_heat_map

Query9

MA_RET_Interp

Query5



© 2019 Microsoft Corporation © 2019 DigitalGlobe © CNES (2019) Distribution Airbus DS © 2019 HERE

pitney bowes © OpenStreetMap contributors

Zoom: 0.06246 mi

Editing: chESApeake_parcel

Selecting: None

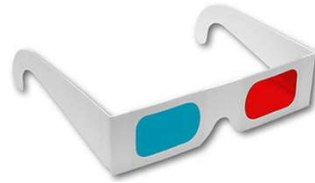
Popular Visualization CRS

jim toolbar1

*retail pitney bowls.WOR

MapInfo Pro 2020 Vision

- MapInfo Pro Explorer version
- Client license management admin tool
- Vertical market apps integrated with data
- Interoperability with Spectrum Spatial
- [Graphical workflow designer](#)
- Cloud-based capabilities



| | | |
|-------------------|----|--------|
| E | 1 | 20/200 |
| F P | 2 | 20/100 |
| T O Z | 3 | 20/70 |
| L P E D | 4 | 20/50 |
| P E C F D | 5 | 20/40 |
| E D F C Z P | 6 | 20/30 |
| F E L O P Z D | 7 | 20/25 |
| D E F P O T E C | 8 | 20/20 |
| L E F O D P C T | 9 | |
| F D P L T C E O | 10 | |
| P E Z O L C F T D | 11 | |

Enterprise Location Analytics For All

Why is this Important?

- Rerun complex tasks quickly
- Perform “what if” analysis by changing parameters
- Create documentation for processes to be used by others
- Create “self-service” processes that can be executed by non-technical users

The screenshot displays the MapInfo Pro interface with a map of Florida. A workflow diagram is overlaid on the bottom half of the screen, illustrating a process for analyzing store and competitor data. The workflow includes steps for opening tables, filtering, buffering, and generating outputs. A table of address data is visible on the left side of the interface.

| ADDR | CITY16 |
|--------------------------|------------|
| 138 US ROUTE 1 | SCARBOROU |
| 95 LARRABEE RD | WESTBROOK |
| 570 FOREST AVE | PORTLAND |
| 512 CANAL ST | LEWISTON |
| 155 COLLEGE AVE | WATERVILLE |
| 62 WESTERN AVE | AUGUSTA |
| 1620 RHODE ISLAND AVE NE | WASHINGTON |
| 625 NEW YORK AVE NW | WASHINGTON |
| 11463 W BROAD ST | RICHMOND |
| 7070 W BROAD ST | HENRICHT |

Workflow

1. Open Tables
2. Filter Tables
3. Buffer Stores and count competitors
4. Generate table
5. Generate map

The workflow diagram shows the following steps:

- My Stores** (Table icon) connects to **SQL Select** (Query icon).
- My Competitors** (Table icon) connects to **SQL Select** (Query icon).
- Both **SQL Select** steps connect to a **Buffer** (Buffer icon).
- The **Buffer** step connects to **New Browser** (Table icon) and **Map** (Map icon).

records: 1 - 10 of 1516

We Need Your Input!

- Knowledge Communities
- [Ideas Page](#)
- Client Visits
- Contact me!

MapInfo Pro

Settings

Share

Community Home

Discussion 2.8K

Blogs 5

Events 11

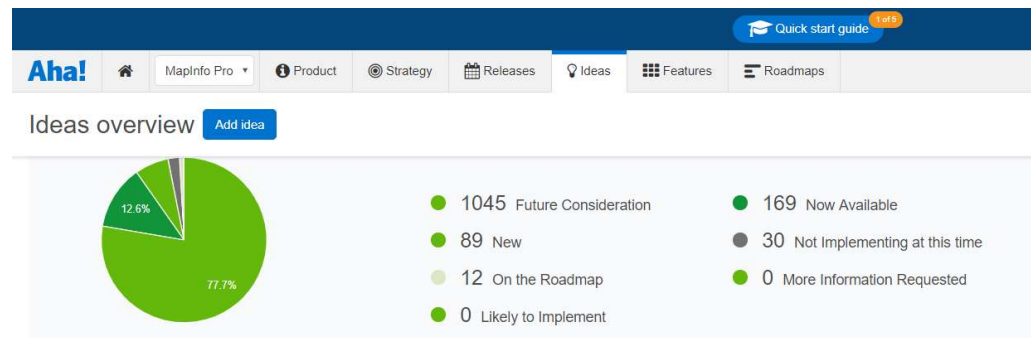
Members 375

Welcome to the MapInfo Pro community! Please feel free to start a discussion in the discussion tab or join in a conversation.

Here are some useful links where you can find more information:

MapInfo Pro Product Information

MapInfo Pro Ideas Page





Pitney Bowes Software & Data Product Ideas

Welcome to the Pitney Bowes Software & Data Ideas Website. This website is intended to provide you with an open and collaborative channel to submit your innovative ideas around Pitney Bowes Software's existing and future offerings. You can easily submit new ideas or comment on existing ideas in a way that is visible and transparent to all participants. You also have the unique opportunity to contribute to an idea's overall popularity by promoting the idea. The Pitney Bowes Software & Data Product Management team will review popular ideas and evaluate their potential for inclusion in our short and long term development plans. Participants who have submitted or commented on an idea may be contacted by our team. Your contact information will not be used for any other purpose. We value your contribution to making Pitney Bowes Software & Data offerings even better and look forward to seeing your ideas.

Important Note: We are changing the "Added to Product Backlog" Status to "Likely to Implement"

Add a new idea

Recent

Trending

Popular

Search ideas

My ideas 0

My votes 0

FILTER BY STATUS

New 151

Future Consideration 1943

1

VOTE

Notification Bundle - deliverDocument request elapsed time

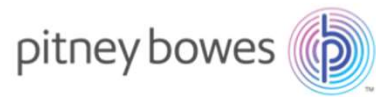
In an EngageOne environment used for OnDemand purpose, where deliverDocument Soap Service is used in order to produce output document, is really important to be able to get the elapsed time for each request submitted to the environment. I mean th...



Created about 3 hours ago by Diego Maggiori
EngageOne Compose

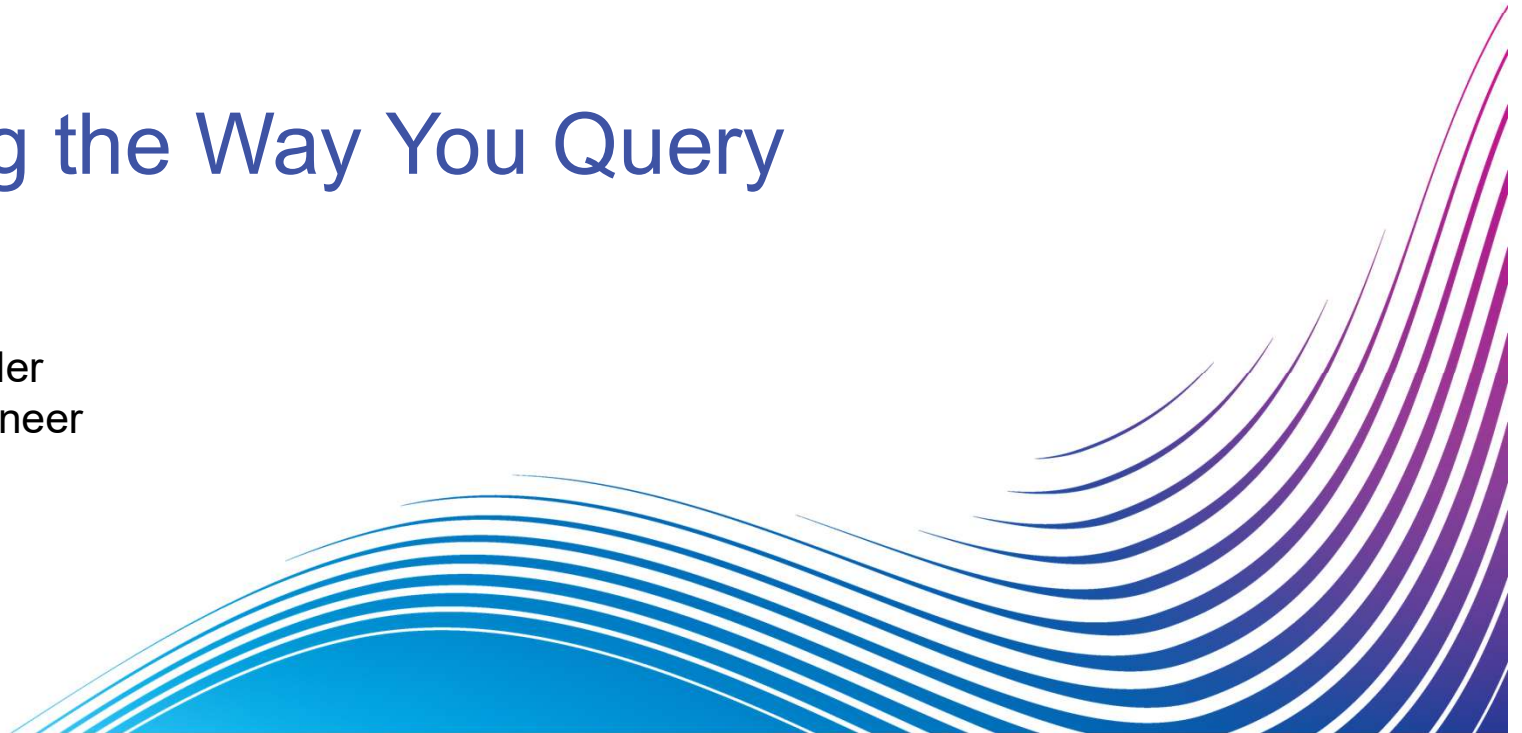
New

0



Improving the Way You Query

Peter Horsboll Moller
Distinguished Engineer



Two approaches

The syntax & functionality

```
Select expression_list
  From table_name [, ...]
[Where expression_group]
[Into results_table [Noselect] [Hide]]
[Group By column_list]
[Order By column_list]
```

The interface

The screenshot shows the 'SQL Select' dialog box with the following fields and options:

- Select Columns:** A text box containing 'Addresses.AddressKey, Addresses.ShortName, Addresses.StreetName, Addresses.HouseNo, Buildings.Zmin'.
- from Tables:** A dropdown menu showing 'Addresses, Buildings'.
- where Condition:** A text box containing 'Addresses.Obj Within Buildings.Obj'.
- Group by Columns:** An empty text box.
- Order by Columns:** An empty text box.
- into Table Named:** A text box containing 'Selection'.
- Right-hand menu:** A vertical list of buttons: 'Tables', 'Columns', 'Operators', 'Aggregates', and 'Functions', each with a dropdown arrow.
- Buttons:** 'Save Template' and 'Load Template' are located to the right of the 'Group by' and 'Order by' fields.
- Checkboxes:** 'Browse Results' is checked. 'Find Results In Current Map Window' and 'Add Results To Current Map Window' are unchecked.
- Footer:** A row of buttons: 'OK', 'Cancel', 'Clear', 'Verify', and 'Help'.

28

VOTE

Improved handling of * in SQL queries

In most implementations of SQL it's possible to use the * wildcard alongside other calculated columns such as: Select *, Proper\$(st_name) "Label", ObjectLen(obj), "km") "st_length" From streets This query would return ALL columns which exist in t...

Created about 1 year ago by nyall@zombiepigs.net
MapInfo Pro

Future Consideration

11

VOTE

Show sql statement on browser windows

Hi, Sometime we have a lot of open browser windows, generated from different queries. It would be nice if we were able to see the actual sql statement that created the individual window. It could be appended to the titlebar, or it could be in an ex...

Created about 1 year ago by Michael Sletved
MapInfo Pro

Future Consideration

5

VOTE

Multiple Query TABS within the SQL Select Window

I find myself regularly using several common queries during particular everyday tasks. Would it be possible to give the SQL select dialog the ability to load/store/save several queries in separate TABS so the user can just tab to the query they wa...

Created about 1 year ago by mjamieson@warwyn.tas.gov.au
MapInfo Pro

Future Consideration

0

9

VOTE

Find and Replace for SQL Select Dialog

Add a find and replace function to the SQL Select dialog box to enable reusing a complex query for another table with a similar structure.

Created about 1 year ago by michelle.cassidy@niwater.com
MapInfo Pro

Future Consideration

6

VOTE

Don't Close SQL window when query applied

Sometimes I use an SQL query over and over again but only varying some value in the query. I would like the SQL Query window to stay open when I click OK so I can go to straight to the next query so that I don't have to go through opening it agai...

Created about 1 year ago by steveking@solidgeology.com.au
MapInfo Pro

Future Consideration

26

VOTE

SQL query - Get unique values from a column

When building a SQL query and setting the where clause, the possibility to "Get unique values" from a column is much needed. Illustration from another software:

Created about 1 year ago by chbl@orbicon.dk
MapInfo Pro

Future Consideration

0

4

VOTE

Add a LIMIT option to SQL queries

MapInfo/MapBasic is missing an option to limit the number of rows returned by a SQL query. Adding a clause to limit the number of results returned would be beneficial ESPECIALLY if the query stops processing as soon as this limit is reached. This...

Created about 1 year ago by nyall@zombiepigs.net
MapInfo Pro

Future Consideration

1

VOTE

Not Carrying Forward the Geography when combining 2 tables through SQL

When you combine 2 tables using SQL - If you need to save the Query to a permanent table, it is not necessary to carry forward any geographical objects. There should be an option in the SQL dialog to exclude any geographical objects l...

Created about 1 year ago by Brumwell
MapInfo Pro

Future Consideration

8

VOTE

Multi-core utilisation for SQL select querying

I often run queries on large amounts of points to locate them in varying zones and districts, problem is that even with dual, quad or hex core machines when it comes to SQL queries Mapinfo currently only uses one core for processing. This isn't a...

Created about 1 year ago by oliver.sims@detec.qld.gov.au
MapInfo Pro

Future Consideration

0

40

VOTE

View the SQL syntax of a query result in the Table List and Layer Control

When hovering over a query table in the Table List or Layer Control, show the SQL Syntax used to create the query as well as the path to the base table. It would also be good if the SQL syntax could be selected and copied to clipboard, eg:

Created about 1 year ago by kalu.r.bush@transport.vic.gov.au
MapInfo Pro

Future Consideration

1

VOTE

Ability to Save a "Table - Update Column" command

It would be nice to be able to save a "Table - Update Column" command the same way we can actually save a Select query or an SQL Select query. May be with an *.upd or *.upc extension (for UPDATE Column). Working with data mostly implies Selects ...

Created about 1 year ago by louis.rousseau@mtq.gouv.qc.ca
MapInfo Pro

Future Consideration

7

VOTE

Select DISTINCT Value

I would like MapInfo Professional to have the functionality to utilise the common SQL DISTINCT function. This would enable me to select distinct records with their geometries in one go. The only option is to group records thereby losing the map obj...

Created about 1 year ago by sean.boyle@niwater.com
MapInfo Pro

Future Consideration

0

4

VOTE

Notify/Warn user when running a query on a query - query not saved in WORKSPACE

In a MapInfo session, it's possible to run an SQL query on another SQL query. The second query result is added to a Mapper, a thematic can be created on the query results, labels added, etc. But when the Workspace is saved, closed and reopened...

Created about 1 year ago by kalu.r.bush@transport.vic.gov.au
MapInfo Pro

Future Consideration

1

VOTE

Query Auto Save for Re-use within session.

The ability to remember the details of the last 'n' queries executed in the SQL query dialog rather than the last single query. This would avoid the need to load saved queries or retype queries into the query dialog when the user is running a...

Created about 1 year ago by mjamieson@warwyn.tas.gov.au
MapInfo Pro

Future Consideration

1

VOTE

Make Select Window dialog box dockable

How about making the Select Window dialog box dockable with layer control and table list? Or at least making the list of windows sortable so that most recently used windows (including layouts) are listed at the top.

Created about 1 year ago by lhay@searcherselmic.com
MapInfo Pro

Future Consideration

0

Pitney Bowes | Everything is Addressable | June 12, 2019


25

5

VOTE

Improve the Query Dialog Boxes Capabilities

Query Dialog Boxes: Dialog boxes in MapInfo are small and difficult to browse. They lack intuitive and suggestive capabilities like what we find elsewhere in other packages. It seems that MapInfo programmers are still thinking in the old days (sor...

 Created about 1 year ago by A-Hafid Selougha
MapInfo Pro


Future Consideration

3

VOTE

Linked SQL based on queries - not only on base tables

When setting up a SQL command between two tables, both tables must be base tables. It would be nice to set up joined queries between queries (views) too without having to save the result of the first query as a base table before opening the n...

 Created about 1 year ago by jkj@envindan.dk
MapInfo Pro

Future Consideration


0

4

VOTE

Allow geographic objects & geographical aggregates in Group By

It's a huge limitation that Group By queries have no support for geographical objects. I'd love to see a few new aggregate functions added to MapInfo for group by queries, such as: "First()" - return the first geographical object encountered by th...

 Created about 1 year ago by nyall@zombiepigs.net
MapInfo Pro

Future Consideration


0

1

VOTE

SQL Linking with rowid

It would be nice to be able to run queries like this: select * from table1,table2 where table1.rowid = table2.someid rowid is here the magic column (1,2,...), not an actual one.

 Created about 1 year ago by uffe@routeware.dk
MapInfo Pro


Future Consideration

3

VOTE

SQL select with two or more tables

I would like to be able to do a spatial select query of point objects which lie within more than one polygon layer. The sticking point seems to be that, where the structures of the two polygon layers differ, the query produces a data mismatch. eg: All...

 Created about 1 year ago by Susan Beetlestone
MapInfo Pro

Future Consideration


0

3

VOTE

Improved SQL on multiple tables

In most database software, inner join, left join, right join and various joins between multiple tables is possible. In MapInfo Pro it is only possible to build SQL queries in a sequential order from table1 to table2 to table3 where there is a direct re...

 Created about 1 year ago by jkj@envindan.dk
MapInfo Pro

Future Consideration


1

2

VOTE

Add style override during Select/SQL process

It would be useful to be able to set the override style of selected objects from within the Select/SQL dialogs. This could be provided as an option whenever the 'add selection to the current map' checkbox is selected. The benefit would be to co...

 Created about 1 year ago by matthew.lee@deependservices.com.au
MapInfo Pro


Future Consideration

7

VOTE

SQL table joins with improved performance

Using a table join in MapInfo can be VERY slow. As an example, this join in MapInfo based on 2 tables ~50,000 records each may run for hours - even when the relevant fields are indexed: "Select * from where ID1 not In (Select ID2 From ..."

 Created about 1 year ago by jkj@envindan.dk
MapInfo Pro

Future Consideration


0

3

VOTE

Enable BREAK in subqueries

When running a query with a subquery like: "Select * From Table1 Where ID In (Select ID From Table2 Group By ID) Into Result" it is not possible to break the operation if the performance is very slow. If a normal "Inner Join"-query has been issued...

 Created about 1 year ago by jkj@envindan.dk
MapInfo Pro

Future Consideration


0

17

VOTE

Refresh/re-run a query

It would be useful to be able to refresh/re-run a query without the existing result being removed from the mapper windows, browsers, etc. Very often I have a query results I've used in a mapper, and then I've changed the base data. It would be gre...

 Created about 1 year ago by kaluribush@transportvic.gov.au
MapInfo Pro


Future Consideration

4

VOTE

"Update column" should be able to update the object column

It would be very useful if the Update Column tool was able to update the object column in a table. I frequently need to copy the objects from one table to another, using a common id field as the join is partly because I'm working around...

 Created about 1 year ago by nyall@zombiepigs.net
MapInfo Pro

Future Consideration


0

12

VOTE

Where clause in table update

Can a where clause be added to the table update dialog box? At the moment when doing if I have to query out the records I need to update and then do the update on that query.

 Created about 1 year ago by callumpeach1@gmail.com
MapInfo Pro

Future Consideration

0

The syntax & functionality

Table Alias:

```
Select a.Name From Addresses As a
```

Column Alias:

```
Select a.Name As OtherName From Addresses As a
```

All columns from a specific table

```
Select a.*, Area(Overlap(a.obj, z.obj), "sq m")  
From PopAreas As a, Zones As z Where a.obj Intersects z.obj
```

Cross Joins

```
Select Addresses.*, ObjectDistance(a.obj, z.obj, "m")  
From Addresses As a, Zones s z  
Where ObjectDistance(a.obj, z.obj, "m") Between 1 And 200
```

The syntax & functionality

Function Defines:

```
Select ObjectInfo(a.obj, OBJ_INFO_NPTS) As Nodes  
From PopAreas As A
```

Where clause for Delete:

```
Delete From PopAreas Where Not OBJ
```

Where clause for Update

```
Update PopAreas Set Area_sqm = Area(obj, "sq_m") Where Area_sqm = 0
```

Spatial Aggregations

```
Select Type, Count(*) "NumRecords", AggregateUnion(OBJ)  
From PopAreas Group By Type
```


The interface

Version 17.0

Simple Select

Select Records from Table:

that Satisfy: Assist...

Store Results in Table:

Sort Results by Column:

☒ Browse Results ☐ Find Results In Current Map Window

OK Cancel Save Template Load Template Help

Expression

Type an expression:

Columns

Operators

Functions

OK Cancel Verify Help

SQL Select

Select Columns:

from Tables:

where Condition:

Group by Columns:

Order by Columns:

into Table Named:

☒ Browse Results ☐ Find Results In Current Map Window
☐ Add Results To Current Map Window

OK Cancel Clear Verify

SQL Select

Select Columns:

from Tables:

where Condition:

Group by Columns:

Order by Columns:

into Table Named:

☒ Browse Results

OK Cancel Clear Verify Help

Tables

Columns

Operators

Aggregates

Functions

Save Template

Load Template

Version 8.0

Prototype

Query Builder

Recent: Cadastre

Syntax is valid

Simple Assisted Advanced

Table: Cadastre

Sort: ELAVNAVN then

Filters:

Sql:
Select *
From Cadastre
Into Selection
Order By ELAVNAVN

Title of help

Learn how to build more complex sql statements

Query Name: Cadastre

Output Table: Selection

Execute

Prototype

Query Builder

Recent: Cadastre

Simple Assisted Advanced

Tables: Cadastre

Columns: ELAVNAVN, MAS_MATRNR

Where:

0 And Or

Group By:

Order By: ELAVNAVN

Query Name: Cadastre

Output Table: Selection

Execute

Syntax is valid

Search

Tables and Columns

- ☐ KOMNR
- ☐ KOMNAVN
- ☐ ELAVSKODE
- ☒ ELAVNAVN
- ☒ MAS_MATRNR
- ☐ MAS_VLITRA
- ☐ LOD_ID
- ☐ SOGNMR

Suggestions

- ELAVNAVN
- ELAVNAVN = "Marienlund Hgd., Odense Jorder"

Functions Operators Aggregates

All Obj 123 str\$ Date

- Abs
- Area
- Buffer
- CartesianArea
- CartesianDistance
- CartesianObjectLen
- CartesianPerimeter

Values

- Marienlund Hgd., Odense Jorder
- Næsbyhoved Mølle, Odense Jorder
- Sømosse, Odense Jorder
- Åløkkegård Hgd., Odense Jorder

Prototype

Query Builder

Recent: Cadastre

Simple Assisted Advanced

Select ELAVNAVN, MAS_MAT
From Cadastre
Into Selection
Order By ELAVNAVN

Cadastre.MAS_MATRNR
MAS_MATRNR

Syntax is valid

Search

Tables and Columns

- ☐ KOMNR
- ☐ KOMNAVN
- ☐ ELAVSKODE
- ☒ ELAVNAVN
- ☒ MAS_MATRNR
- ☐ MAS_VLITRA
- ☐ LOD_ID
- ☐ SOGNRNR

Functions Operators Aggregates

All Obj 123 str\$ Date

Abs

Area

Buffer

CartesianArea

CartesianDistance

CartesianObjectLen

CartesianPerimeter

Suggestions

ELAVNAVN

ELAVNAVN = "Marienlund Hgd., Odense Jorder"

Values

Marienlund Hgd., Odense Jorder

Næsbyhoved Mølle, Odense Jorder

Sømosse, Odense Jorder

Åløgkegård Hgd., Odense Jorder

Query Name: Cadastre

Output Table: Selection

Execute